
ADVANTEST[®]
ADVANTEST CORPORATION

R3681 Series OPT74

Pulse Modulator

User's Guide

MANUAL NUMBER FOE-8440235A00

Applicable Models

R3681

R3671

TABLE OF CONTENTS

1.	INTRODUCTION	1-1
1.1	Organization of This Document	1-1
1.2	Product Overview	1-2
1.3	Other Manuals Pertaining to This Instrument	1-2
1.4	Conventions of Notation Used in This Document	1-3
1.5	Trademarks and Registered Trademarks	1-4
2.	PRE-OPERATION TIPS	2-1
2.1	If Faults Should Occur	2-1
2.2	Removing of Case	2-1
2.3	Overcurrent Protection	2-1
2.4	Hard Disk Drive	2-1
2.5	Handling the Touch Screen	2-2
2.6	Getting the Software Running with Stability	2-2
2.7	Tip on Transportation	2-3
2.8	Electromagnetic Interference	2-3
2.9	Limitations Imposed when Using Windows XP	2-4
3.	SETUP	3-1
3.1	Unpacking Inspection	3-1
3.2	Locating This Instrument	3-2
3.2.1	Operating Environment	3-2
3.2.2	Prevention of Electrostatic Buildup	3-3
4.	EXAMPLES OF OPERATIONS	4-1
4.1	The Name and Functions of Each Component on The Rear Panel	4-1
4.2	Operating Method	4-2
4.2.1	Burst Period Setting	4-2
5.	MENU MAP, FUNCTIONAL EXPLANATION	5-1
5.1	Menu Index	5-1
5.1.1	{AMPL}	5-2
6.	SCPI COMMAND REFERENCE	6-1
6.1	Command Reference Format	6-1
6.2	Common Commands	6-3
6.3	AMPL Button	6-4
7.	SPECIFICATIONS	7-1
8.	PERFORMANCE VERIFICATION	8-1

Table of Contents

8.1	Overview	8-1
8.1.1	Introduction	8-1
8.1.2	Required Instruments	8-2
8.2	Loading Waveform Data	8-3
8.3	Pulse Modulator Performance Verification Procedure	8-4
8.3.1	MARKER1 OUT Output Waveform	8-4
8.3.2	Pulse Modulator Output Waveform	8-10
8.4	Pulse Modulator Performance Verification Record Sheets	8-15
APPENDIX		A-1
A.1	Waveform File Configuration	A-1
A.2	Header Syntax	A-2
A.3	Error Codes	A-3
ALPHABETICAL INDEX		I-1

LIST OF ILLUSTRATIONS

No.	Title	Page
3-1	Operating Environment	3-2
3-2	Countermeasures for Static Electricity of Human Body	3-3
3-3	Countermeasures for Static Electricity on Work Floor	3-3
3-4	Countermeasures for Static Electricity on Workbench	3-4
4-1	Rear Panel	4-1
4-2	Initial Setting Screen	4-3
4-3	Connection diagram	4-4
4-4	Connection diagram	4-5
4-5	SG+AWG Screen	4-5
4-6	[Waveform Setup] Dialog Box	4-6
4-7	[Memory Segments] Change Inquiry Message Box	4-6
4-8	Example of Checking the SG OUTPUT Signal by Using the SA	4-8
4-9	OPT74.awv Screen Output Default Settings	4-9
4-10	[Marker Setup] Dialog Box	4-9
4-11	[Marker Setup] Dialog Box	4-10
4-12	OPT74.awv Screen after Changing Burst Period	4-11
4-13	OPT74.awv Screen after Setting Marker to Neg	4-12
8-1	Connection Diagram for MARKER1 OUT Output Waveform Verification	8-4
8-2	I/Q Output Mode Setting	8-6
8-3	Marker Output Setting	8-6
8-4	Sequencer Marker Setting	8-7
8-5	Waveform Verification for the Positive Sequencer Marker	8-8
8-6	Waveform Verification for the Negative Sequencer Marker	8-9
8-7	Waveform Verification for the Memory Marker	8-9
8-8	Pulse Modulator Output Waveform Verification Connection Diagram	8-10
8-9	ON/OFF Ratio Measurement	8-12
8-10	Fall Time Measurement	8-13
8-11	Rise Time Measurement	8-14

LIST OF TABLES

No.	Title	Page
3-1	Standard Accessories (OPT74)	3-1
3-2	ESD Countermeasures	3-3
8-1	Performance Verification List	8-1
8-2	Required Instruments List	8-2

1. INTRODUCTION

This chapter introduces you to the organization of this document and a product overview of the R3681 Series Signal Analyzer (Option 74) to help you get the most out of this document.

1.1 Organization of This Document

The contents of each chapter of this manual are as follows:

For more information on the basic operating method, functions, and remote programming of the signal analyzer, refer to 1.3, "Other Manuals Pertaining to This Instrument."

Chapter 1, "INTRODUCTION"	Introduces you to the organization of this document and a product overview to help you get the most out of this document.
Chapter 2, "PRE-OPERATION TIPS"	Provides preliminary tips on using this instrument. Read this chapter before using this instrument.
Chapter 3, "SETUP"	Explains how to set up this instrument on delivery.
Chapter 4, "EXAMPLES OF OPERATIONS"	Describes the names and functions on the rear panel of this instrument.
Chapter 5, "MENU MAP, FUNCTIONAL EXPLANATION"	Describes the menu configurations and functions of soft keys.
Chapter 6, "SCPI COMMAND REFERENCE"	SCPI command reference.
Chapter 7, "SPECIFICATIONS"	Describes the specifications of option 74.
APPENDIX	Describes the waveform file configuration and the header syntax.

1.2 Product Overview

1.2 Product Overview

The pulse modulation can be performed on the SG output by adding this option (OPT74) to the digital modulation SG (OPT72).

- The MARKER1 OUT connector and the RAMP IN connector have been added to the rear panel.
- When the RAMP IN connector is used the burst ON/OFF ratio of the SG output is expanded up to 60 dB or more.
- The Sample & Hold mode has been added to the SG ALC mode.

1.3 Other Manuals Pertaining to This Instrument

Available manuals pertaining to the R3681 Series include:

- User's Guide (Part Code: {ER3681SERIES/U}, English)
Contains information prerequisite to using the R3681 Series Signal Analyzer, ranging from setup to basic operation, applied measurement, functionality, specifications, and maintenance.
- Programming Guide (Part Code: {ER3681SERIES/P}, English)
Covers programming information to use the R3681 Series Signal Analyzer to automate measurement sequences, including a remote control overview, SCPI command references, and sample application programs.
- Performance Test Guide (Part Code: {ER3681SERIES/T}, English)
Covers information necessary to verify the performance of the R3681 Series Signal Analyzer, including performance test procedures and specifications.
- R3681 Series OPT72 Digital Signal Generation Module User's Guide (Part Code: {ER3681 OPT72}, English)
This manual describes the information required to use the R3681 Series OPT72 digital signal generation module. It includes the setup, basic operation, function descriptions, remote control overview, SCPI command, specifications, and maintenance of the signal generation module.

1.4 Conventions of Notation Used in This Document

In this document, panel keys, on-screen buttons and menus are represented by the following symbols:

On-panel hard keys

Sample Represents an on-panel hard key labeled "Sample."
 Example: **START**, **STOP**

On-screen system menus

[Sample] Represents an on-screen menu, tab, button or dialog box that is labeled "Sample" and that is selected or executed when touched.
 Example: **[File]** menu, **[Normal]** tab, **[Option]** button

On-screen function buttons

{Sample} Represents an on-screen function button labeled "Sample."
 Example: **{FREQ}** button, **{SWEEP}** button

On-screen side menu

Sample Represents an on-screen side menu key labeled "Sample."
 Example: **Center** key, **Span** key

On-screen system menu key operation

[File]→[Save As...] Indicates a touch on the **[File]** menu followed by a choice of **[Save As...]**.

Sequential key operation

{FREQ}, Center Indicates a touch on the **{FREQ}** button followed by a touch on the **Center** key.

Toggle key operation

ΔMarker On/Off (On) Indicates a touch on the **ΔMarker On/Off** key to turn on the ΔMarker.

NOTE: Screen displays and diagrams such as external view of the main unit in this manual are those of the R3681 in the R3681 series.

1.5 Trademarks and Registered Trademarks

1.5 Trademarks and Registered Trademarks

- Microsoft® and Windows® are trademarks or registered trademarks of Microsoft Corporation in the United States and other countries.
- Other product and company names referenced herein are trademarks or registered trademarks of their respective owners.

2. PRE-OPERATION TIPS

This chapter provides preliminary tips on using this instrument. Read this chapter before using this instrument.

2.1 If Faults Should Occur

If this instrument is found to smoke or deliver offensive odors or abnormal noises, switch off the power breaker and remove the power cable from the AC power connector to power off this instrument. Then, contact your dealer or us immediately.

2.2 Removing of Case

The case should not be opened except by service personnel of our company.

WARNING: *High-voltage and high-temperature parts inside. You may get electrical shocks or burnt if you touch them.*

2.3 Overcurrent Protection

This instrument is protected from overcurrent flow by a power breaker.

Located on the rear panel, the power breaker automatically forces an interruption of the power supply when an overcurrent flows through this instrument. When the power breaker has turned off, remove the power cable from the AC power connector to power off this instrument. Then, call upon your dealer or us for repair services to fix a possible fault that has occurred in this instrument.

2.4 Hard Disk Drive

This instrument has a built-in hard disk drive. When handling the hard disk drive, take notice of these instructions.

- Do not impact or vibrate the hard disk drive.
Damage to the disk on which data is stored could result, increasing the chances of malfunctioning or failing during operations.
- Do not switch off this instrument while the HDD access lamp is lit.
The data being accessed might be damaged.

CAUTION: *We do not assume any responsibility for the loss or corruption of data stored on the hard disk drive that might result from its faults.*

2.5 Handling the Touch Screen

2.5 Handling the Touch Screen

This instrument has a touch screen. When handling the touch screen, take notice of these instructions.

- Do not give strong impacts or apply undue force to the screen.
The glass could be cracked.
- Use the stylus pen included with this instrument to operate the screen.
Use of a hard-pointed material (such as a mechanical pencil or ballpoint) could scratch the screen surface.

2.6 Getting the Software Running with Stability

The R3681 Series Signal Analyzer has Microsoft Windows XP pre-installed.

The measuring function of this instrument is dependent on the Windows environment. Do not alter the Windows operating environment in any way other than as described in this manual.

Furthermore, this instrument is not a data processor. Operate it only as described in this manual.

1. Non-permitted actions:

- Installing other application programs.
- Changing or deleting items in the control panel (except for A.2, "Installing the Printer Driver" and A.3, "Setting up the Network" of the R3681 Series User's Guide).
- Opening or operating the existing files on the C drive.
- Operating other application programs during the measurement.
- Upgrading the Windows operating system.
- If this instrument does not function correctly due to any of the above, re-install the system using the system recovery disk.
For the method for recovery, refer to the R3681 Series User's Guide.

2. Computer viruses

Depending on the operating environment and method, the system can be contaminated by a computer virus.

To use the system securely, it is recommended to take the following countermeasures:

- Run a virus check before loading a file or media from an outside source.
- Make sure that any network has safety measures against computer viruses before connecting.

[If infected with a computer virus:]

- Delete all files on the D drive. Re-install the system using the recovery disk.
For more information on the system recovery method, refer to the R3681 Series User's Guide.

2.7 Tip on Transportation

This instrument is heavy, so two or more people should carry it or a dolly should be used to transport it.

2.8 Electromagnetic Interference

This instrument may cause electromagnetic interference and affect television and radio reception.

If this instrument's power is turned off and the electromagnetic interference is reduced, then this instrument has caused the problem.

Electromagnetic interference may be prevented by doing the following:

- Change the direction of the antenna of the television or radio.
- Place this instrument on the other side of the television or radio.
- Place this instrument away from the television or radio.
- Use different lines for the power sources for the television or radio and this instrument.

2.9 Limitations Imposed when Using Windows XP

2.9 Limitations Imposed when Using Windows XP

END-USER LICENSE AGREEMENT

- You have acquired a device ("INSTRUMENT") that includes software licensed by [ADVANTEST] from Microsoft Licensing Inc. or its affiliates ("MS"). Those installed software products of MS origin, as well as associated media, printed materials, and "online" or electronic documentation ("SOFTWARE") are protected by international intellectual property laws and treaties. The SOFTWARE is licensed, not sold. All rights reserved.
- IF YOU DO NOT AGREE TO THIS END USER LICENSE AGREEMENT ("EULA"), DO NOT USE THE INSTRUMENT OR COPY THE SOFTWARE. INSTEAD, PROMPTLY CONTACT [ADVANTEST] FOR INSTRUCTIONS ON RETURN OF THE UNUSED INSTRUMENT(S) FOR A REFUND. ANY USE OF THE SOFTWARE, INCLUDING BUT NOT LIMITED TO USE ON THE INSTRUMENT, WILL CONSTITUTE YOUR AGREEMENT TO THIS EULA (OR RATIFICATION OF ANY PREVIOUS CONSENT).
- **GRANT OF SOFTWARE LICENSE.** This EULA grants you the following license:
 - You may use the SOFTWARE only on the INSTRUMENT.
 - **NOT FAULT TOLERANT. THE SOFTWARE IS NOT FAULT TOLERANT.** [ADVANTEST] HAS INDEPENDENTLY DETERMINED HOW TO USE THE SOFTWARE IN THE INSTRUMENT, AND MS HAS RELIED UPON [ADVANTEST] TO CONDUCT SUFFICIENT TESTING TO DETERMINE THAT THE SOFTWARE IS SUITABLE FOR SUCH USE.
 - **NO WARRANTIES FOR THE SOFTWARE. THE SOFTWARE is provided "AS IS" and with all faults. THE ENTIRE RISK AS TO SATISFACTORY QUALITY, PERFORMANCE, ACCURACY, AND EFFORT (INCLUDING LACK OF NEGLIGENCE) IS WITH YOU. ALSO, THERE IS NO WARRANTY AGAINST INTERFERENCE WITH YOUR ENJOYMENT OF THE SOFTWARE OR AGAINST INFRINGEMENT.** IF YOU HAVE RECEIVED ANY WARRANTIES REGARDING THE INSTRUMENT OR THE SOFTWARE, THOSE WARRANTIES DO NOT ORIGINATE FROM, AND ARE NOT BINDING ON, MS.
 - **No Liability for Certain Damages. EXCEPT AS PROHIBITED BY LAW, MS SHALL HAVE NO LIABILITY FOR ANY INDIRECT, SPECIAL, CONSEQUENTIAL OR INCIDENTAL DAMAGES ARISING FROM OR IN CONNECTION WITH THE USE OR PERFORMANCE OF THE SOFTWARE. THIS LIMITATION SHALL APPLY EVEN IF ANY REMEDY FAILS OF ITS ESSENTIAL PURPOSE. IN NO EVENT SHALL MS BE LIABLE FOR ANY AMOUNT IN EXCESS OF U.S. TWO HUNDRED FIFTY DOLLARS (U.S.\$250.00).**
 - **Limitations on Reverse Engineering, Decompilation, and Disassembly.** You may not reverse engineer, decompile, or disassemble the SOFTWARE, except and only to the extent that such activity is expressly permitted by applicable law notwithstanding this limitation.
 - **SOFTWARE TRANSFER ALLOWED BUT WITH RESTRICTIONS.** You may permanently transfer rights under this EULA only as part of a permanent sale or transfer of the INSTRUMENT, and only if the recipient agrees to this EULA. If the SOFTWARE is an upgrade, any transfer must also include all prior versions of the SOFTWARE.
 - **EXPORT RESTRICTIONS.** You acknowledge that SOFTWARE is of US-origin. You agree to comply with all applicable international and national laws that apply to the SOFTWARE, including the U.S. Export Administration Regulations, as well as end-user, end-use and country destination restrictions issued by U.S. and other governments. For additional information on exporting the SOFTWARE, see <http://www.microsoft.com/exporting/>.
- **Installation and Use.** The SOFTWARE may not be used by more than two (2) processors at any one time on the INSTRUMENT. You may permit a maximum of ten (10) computers or other electronic devices (each a "Client") to connect to the INSTRUMENT to utilize the services of the SOFTWARE solely for file and print services, internet information services, and remote access (including connection sharing and telephony services). The ten (10) connection maximum includes any indirect connections made through "multiplexing" or other software or hardware which pools or aggregates connections. Except as otherwise permitted in the NetMeeting/Remote Assistance/Remote Desktop Features terms below, you may not use a Client to use, access, display or run the SOFTWARE, the SOFTWARE's user interface or other executable software residing on the INSTRUMENT.
- If you use the INSTRUMENT to access or utilize the services or functionality of Microsoft Windows Server products (such as Microsoft Windows NT Server 4.0 (all editions) or Microsoft Windows 2000 Server (all editions)), or use the INSTRUMENT to permit workstation or computing devices to access or utilize the services or functionality of Microsoft Windows Server products, you may be required to obtain a Client Access License for the INSTRUMENT and/or each such workstation or computing device. Please refer to the end user license agreement for your Microsoft Windows Server product for additional information.
- **Restricted Uses.** The SOFTWARE is not designed or intended for use or resale in hazardous environments requiring fail-safe performance, such as in the operation of nuclear facilities, aircraft navigation or communication systems, air traffic control, or other devices or systems in which a malfunction of the SOFTWARE would result in foreseeable risk of injury or death to the operator of the device or system, or to others.
- **Restricted Functionality.** You are licensed to use the SOFTWARE to provide only the limited functionality (specific tasks or processes) for which the INSTRUMENT has been designed and marketed by

[ADVANTEST]. This license specifically prohibits any other use of the software programs or functions, or inclusion of additional software programs or functions, on the INSTRUMENT.

- || **Security Updates.** Content providers are using the digital rights management technology ("Microsoft DRM") contained in this SOFTWARE to protect the integrity of their content ("Secure Content") so that their intellectual property, including copyright, in such content is not misappropriated. Owners of such Secure Content ("Secure Content Owners") may, from time to time, request MS, Microsoft Corporation or their subsidiaries to provide security related updates to the Microsoft DRM components of the SOFTWARE ("Security Updates") that may affect your ability to copy, display and/or play Secure Content through Microsoft software or third party applications that utilize Microsoft DRM. You therefore agree that, if you elect to download a license from the Internet which enables your use of Secure Content, MS, Microsoft Corporation or their subsidiaries may, in conjunction with such license, also download onto your INSTRUMENT such Security Updates that a Secure Content Owner has requested that MS, Microsoft Corporation or their subsidiaries distribute. MS, Microsoft Corporation or their subsidiaries will not retrieve any personally identifiable information, or any other information, from your INSTRUMENT by downloading such Security Updates.
- **NetMeeting/Remote Assistance/Remote Desktop Features.** The SOFTWARE may contain NetMeeting, Remote Assistance, and Remote Desktop technologies that enable the SOFTWARE or other applications installed on the INSTRUMENT to be used remotely between two or more computing devices, even if the SOFTWARE or application is installed on only one INSTRUMENT. You may use NetMeeting, Remote Assistance, and Remote Desktop with all Microsoft products; provided however, use of these technologies with certain Microsoft products may require an additional license. For both Microsoft products and non-Microsoft products, you should consult the license agreement accompanying the applicable product or contact the applicable licensor to determine whether use of NetMeeting, Remote Assistance, or Remote Desktop is permitted without an additional license.
- **Consent to Use of Data.** You agree that MS, Microsoft Corporation and their affiliates may collect and use technical information gathered in any manner as part of product support services related to the SOFTWARE. MS, Microsoft Corporation and their affiliates may use this information solely to improve their products or to provide customized services or technologies to you. MS, Microsoft Corporation and their affiliates may disclose this information to others, but not in a form that personally identifies you.
- **Internet Gaming/Update Features.** If the SOFTWARE provides, and you choose to utilize, the Internet gaming or update features within the SOFTWARE, it is necessary to use certain computer system, hardware, and software information to implement the features. By using these features, you explicitly authorize MS, Microsoft Corporation and/or their designated agent to use this information solely to improve their products or to provide customized services or technologies to you. MS or Microsoft Corporation may disclose this information to others, but not in a form that personally identifies you.
- **Internet-Based Services Components.** The SOFTWARE may contain components that enable and facilitate the use of certain Internet-based services. You acknowledge and agree that MS, Microsoft Corporation or their affiliates may automatically check the version of the SOFTWARE and/or its components that you are utilizing and may provide upgrades or supplements to the SOFTWARE that may be automatically downloaded to your INSTRUMENT.
- **Links to Third Party Sites.** The SOFTWARE may provide you with the ability to link to third party sites through the use of the SOFTWARE. The third party sites are not under the control of MS, Microsoft Corporation or their affiliates. Neither MS nor Microsoft Corporation nor their affiliates are responsible for (i) the contents of any third party sites, any links contained in third party sites, or any changes or updates to third party sites, or (ii) webcasting or any other form of transmission received from any third party sites. If the SOFTWARE provides links to third party sites, those links are provided to you only as a convenience, and the inclusion of any link does not imply an endorsement of the third party site by MS, Microsoft Corporation or their affiliates.
- **Additional Software/Services.** The SOFTWARE may permit [ADVANTEST], MS, Microsoft Corporation or their affiliates to provide or make available to you SOFTWARE updates, supplements, add-on components, or Internet-based services components of the SOFTWARE after the date you obtain your initial copy of the SOFTWARE ("Supplemental Components").
- If [ADVANTEST] provides or makes available to you Supplemental Components and no other EULA terms are provided along with the Supplemental Components, then the terms of this EULA shall apply.
- If MS, Microsoft Corporation or their affiliates make available Supplemental Components, and no other EULA terms are provided, then the terms of this EULA shall apply, except that the MS, Microsoft Corporation or affiliate entity providing the Supplemental Component(s) shall be the licensor of the Supplemental Component(s).

[ADVANTEST], MS, Microsoft Corporation and their affiliates reserve the right to discontinue any Internet-based services provided to you or made available to you through the use of the SOFTWARE.

This EULA does not grant you any rights to use the Windows Media Format Software Development Kit ("WMFSDK") components contained in the SOFTWARE to develop a software application that uses Windows Media technology. If you wish to use the WMFSDK to develop such an application, visit <http://msdn.microsoft.com/workshop/imedia/windowsmedia/sdk/wmsdk.asp>, accept a separate license for the WMFSDK, download the appropriate WMFSDK, and install it on your system.

3. SETUP

This chapter explains how to set up this instrument on delivery. Topics covered in this chapter are:

- 3.1 Unpacking Inspection
- 3.2 Locating This Instrument

3.1 Unpacking Inspection

When the product is delivered, check it for its appearance and accessories included by following these steps:

1. Check to see if the box or the cushioning material in which the product was shipped has been damaged during transit.

IMPORTANT: *If the box or the cushioning material is found damaged, leave them in their original condition until the inspection described below completes.*

2. Check the product surfaces for any damage.

WARNING: *Do not power on this instrument if the cover, panels (front and rear), LCD display, power switch, connector or any other key component is found damaged. Electrical shock hazards could result from using damaged components.*

3. Make sure that all of the standard accessories are included and they are free from any damage, in accordance with the List of Table 3-1 Standard Accessories (OPT74).

Contact your dealer or us in any of the following situations:

- The box or the cushioning material in which the product was shipped was damaged during transit, or there is evidence of a massive force having been applied to the cushioning material.
- The product surfaces are damaged.
- One or more standard accessories are missing or damaged.
- Defects have been detected in a subsequent product verification test.

Table 3-1 Standard Accessories (OPT74)

Name	Model	Quantity
R3681 Series OPT74 Pulse Modulator User's Guide	ER3681OPT74	1

3.2 Locating This Instrument

3.2 Locating This Instrument

This section describes the installation environment in which this instrument runs successfully.

3.2.1 Operating Environment

This instrument should only be used in a place that satisfies the following conditions:

- Ambient temperature: +5 °C to +40 °C (operating temperature)
-20 °C to +60 °C (storage temperature range)
- Relative humidity: RH80% or less (no condensation)
- An area free from corrosive gas
- An area away from direct sunlight
- A dust-free area
- An area free from vibrations
- A low noise area

Although this instrument has been designed to withstand a certain amount of noise riding on the AC power line, it should be used in an area of low noise.

Use a noise filter when ambient noise is unavoidable.

- An area allowing unobstructed airflow

There is an exhaust-cooling fan on the rear panel and exhaust vents on both sides and the bottom (toward the front) of this instrument. Never block these vents. The resulting internal temperature rise will affect measurement accuracy. Keep the rear panel 10 centimeters away from the wall. In addition, do not attempt to use this instrument when it is standing on its rear panel or on either side panel.

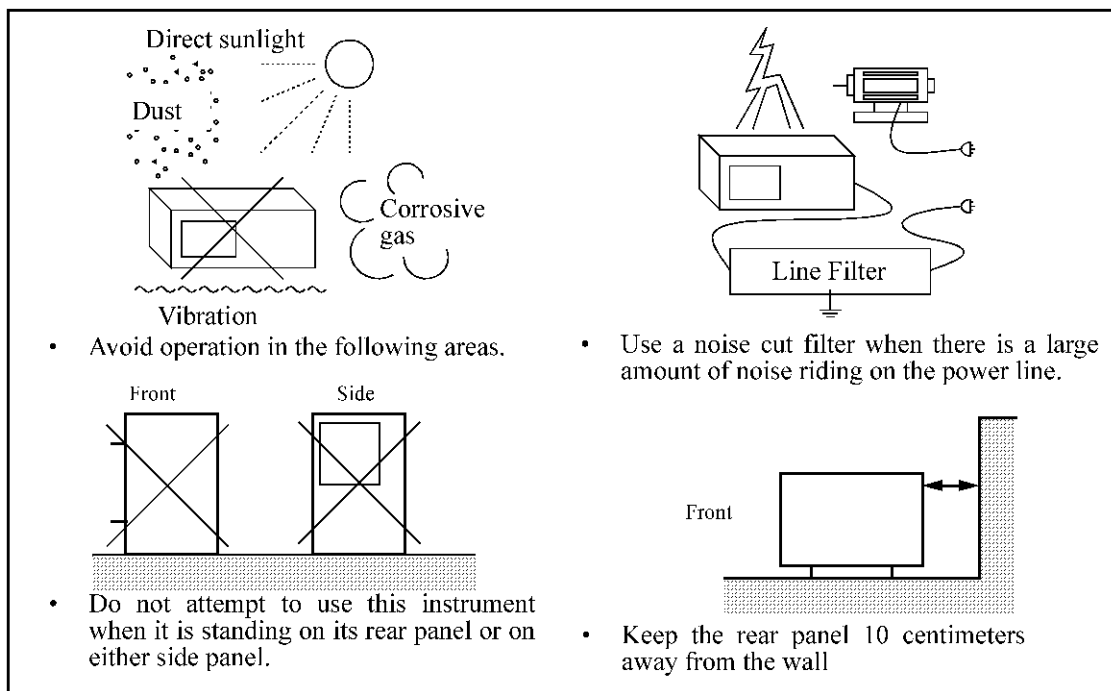


Figure 3-1 Operating Environment

3.2.2 Prevention of Electrostatic Buildup

To prevent damage to semiconductor parts from electrostatic discharge (ESD), the precautions shown below should be taken. We recommend that two or more countermeasures are combined to provide adequate protection from ESD.

(Static electricity can easily be built up when a person moves or an insulator is rubbed.)

Table 3-2 ESD Countermeasures

Operator	Use a wrist strap (see Figure 3-2).
Floor in the work area	Installation of a conductive mat, the use of conductive shoes, and grounding (see Figure 3-3).
Workbench	Installation of a conductive mat and grounding (see Figure 3-4).

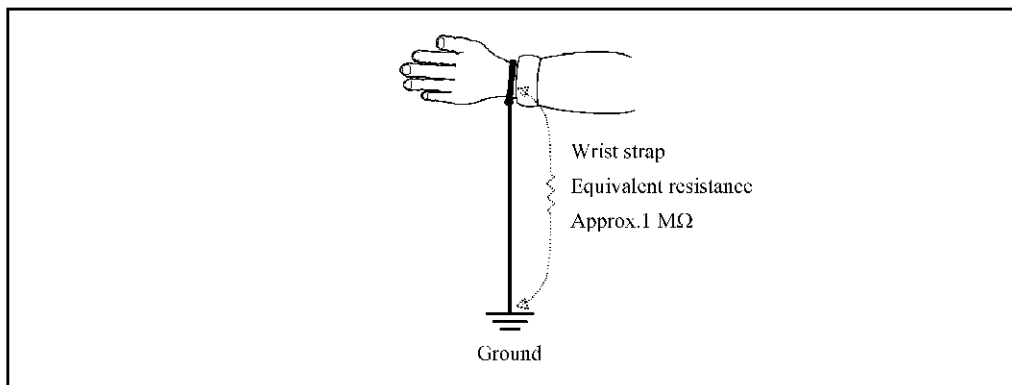


Figure 3-2 Countermeasures for Static Electricity of Human Body

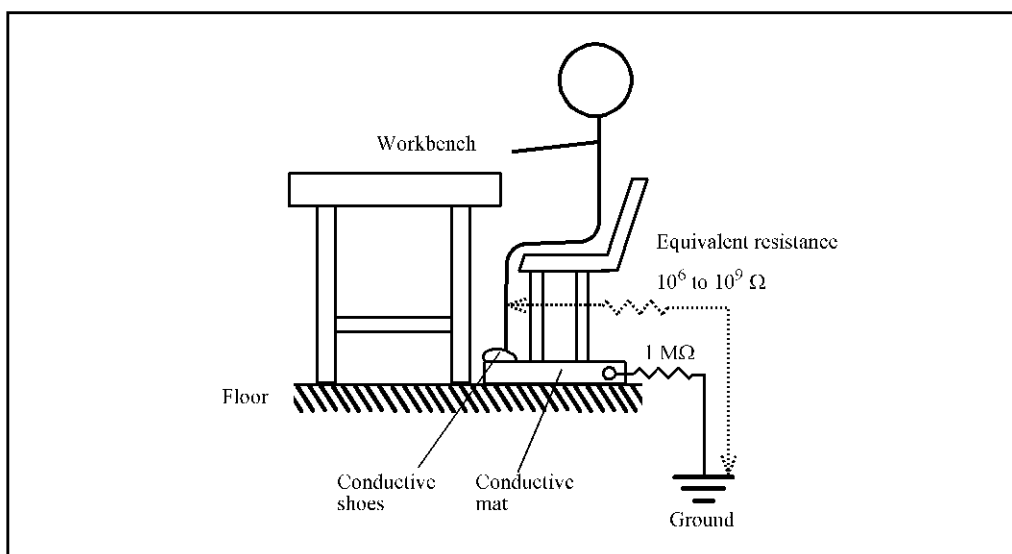


Figure 3-3 Countermeasures for Static Electricity on Work Floor

3.2.2 Prevention of Electrostatic Buildup

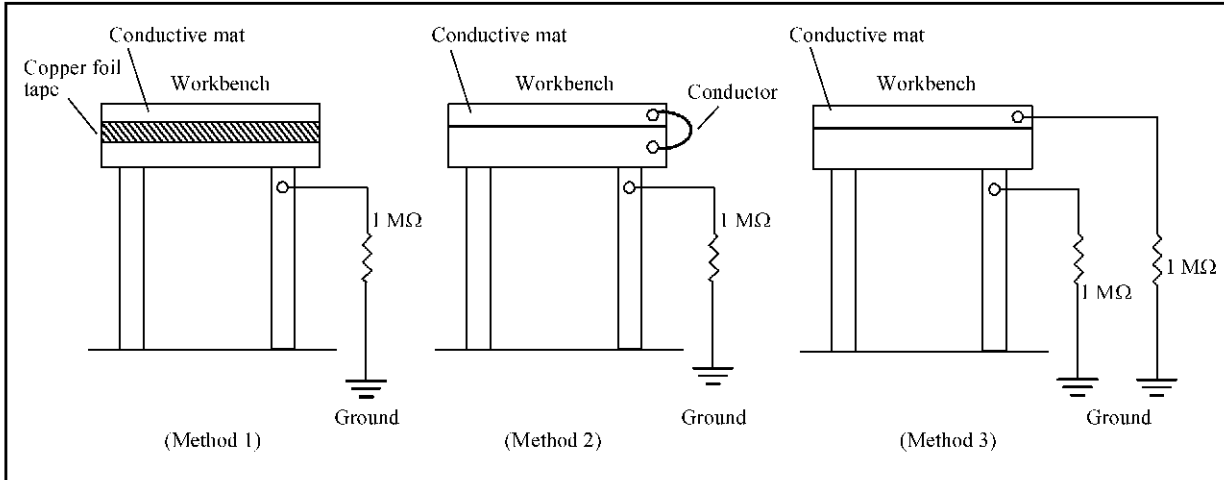


Figure 3-4 Countermeasures for Static Electricity on Workbench

4. EXAMPLES OF OPERATIONS

4.1 The Name and Functions of Each Component on The Rear Panel

This subsection describes the name and function of each component on the rear panel.

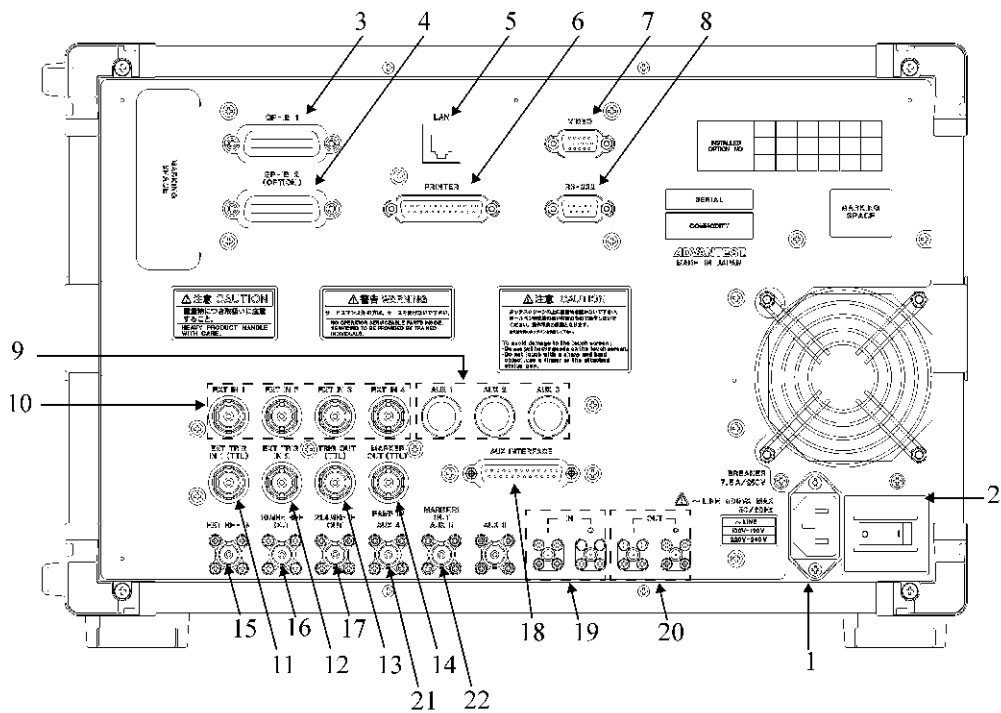


Figure 4-1 Rear Panel

- 1 to 20 Refer to the R3681 Series OPT72 Digital Signal Generator Module User's Guide.
- 21 RAMP IN connector Inputs the external modulation signal (TTL level (negative logic)).
- 22 MARKER1 OUT connector Outputs the MARKER1 signal (TTL level) of AWG.

4.2 Operating Method

4.2 Operating Method

This section describes the following basic operating procedures that allow the user to become familiar with the operation of this software.

- 4.2.1 Burst Period Setting

4.2.1 Burst Period Setting

[Required equipment]

OPT3681+74

Output cable: BNC(m)-BNC(m) 2 cables

Conversion adapter: N(m)-BNC(f) 1 adapter

Conversion adapter: SMA(m)-SMA(f) 1 adapter

Conversion adapter: SMA(m)-BNC(f) 1 adapter

NOTE: *In the R3671, two N(m)-BNC(f) adapters are used instead of an SMA(m)-SMA(f) adapter and an SMA(m)-BNC(f) adapter.*

Turning on the power supply

1. Verify that the power supply circuit breaker on the rear panel is OFF.
2. Connect the attached power cable to the AC power connector on the rear panel.
3. Turn ON the power supply circuit breaker on the rear panel.
After turning ON the power supply circuit breaker, wait for three seconds or longer.
4. Turn ON the power switch on the front panel.
When the self-test is completed, the screen returns to the startup screen.

MEMO: *The display after turning ON the power supply differs depending on the state of last use.*

Initialization

Initializes the settings of this instrument.

5. Touch **[Special]** on the menu bar and select **[Preset]**→**[All]**.
Initial setting conditions are loaded.

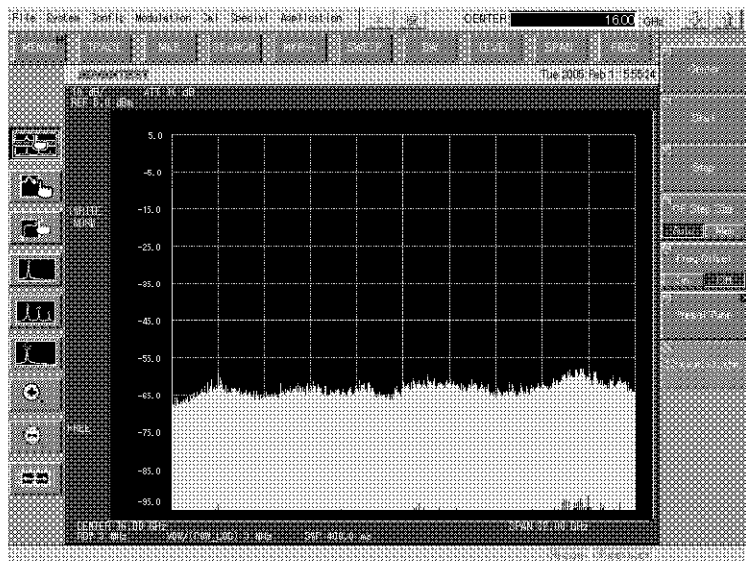


Figure 4-2 Initial Setting Screen

4.2.1 Burst Period Setting

Connection

6. Attach the SMA(f)-SMA(f) adapter to the INPUT connector on the front panel. Attach the SMA(m)-BNC(f) adapter to the SMA(f)-SMA(f) adapter and connect the BNC(m)-BNC(m) cable to the SMA(m)-BNC(f) adapter and the SG output.

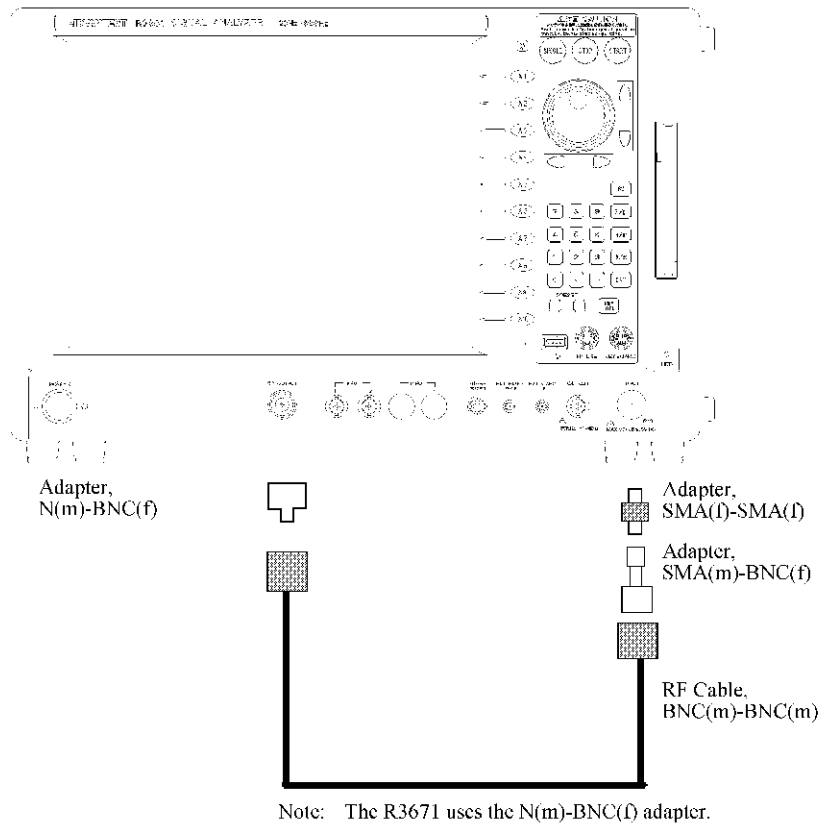


Figure 4-3 Connection diagram

7. Connect the MARKER1 OUT connector and the RAMP IN connector on the rear panel by using a BNC(m)-BNC(m) cable.

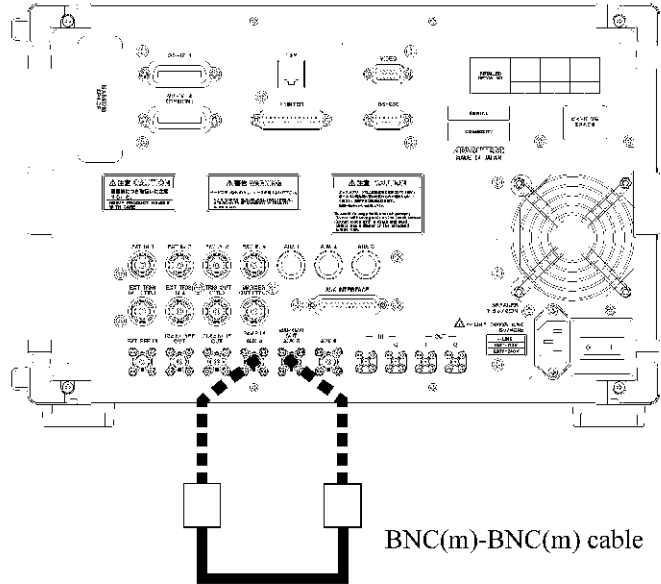


Figure 4-4 Connection diagram

AWG setting

8. Touch **[Config]** on the menu bar and select **[SG+AWG Option]**. The SG+AWG screen will be displayed.

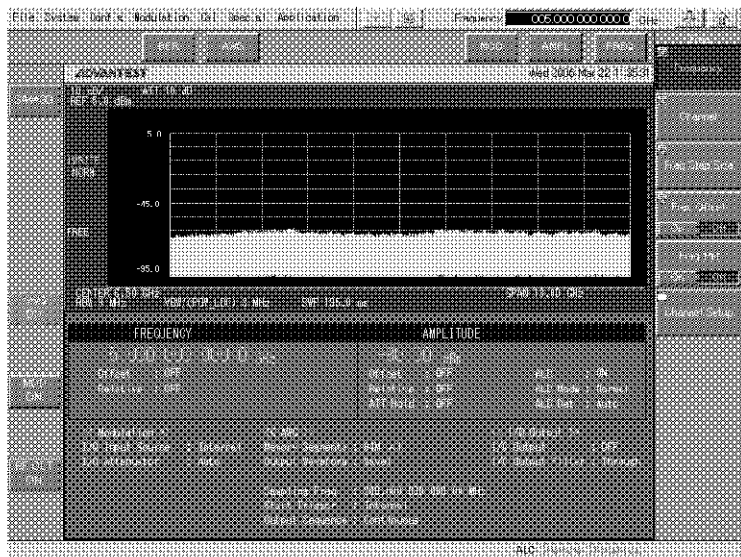


Figure 4-5 SG+AWG Screen

4.2.1 Burst Period Setting

9. Touch [Cal] on the menu bar and select [AWG Cal] to carry out calibration.

IMPORTANT: *Execute auto-calibration after turning on the power supply and letting it warm up for 30 minutes or longer.*

10. Touch the {AWG} button on the function bar.
11. Touch the **Waveform Setup** key on the soft menu bar.
The [Waveform Setup] dialog box will be displayed.

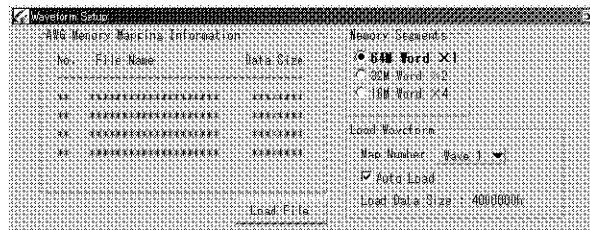


Figure 4-6 [Waveform Setup] Dialog Box

12. Touch [16M Word × 4] of [Memory Segments] on the [Waveform Setup] dialog box.
A message box to confirm whether or not it is okay to change [Memory Segments] will be displayed. Touch the [OK] button.

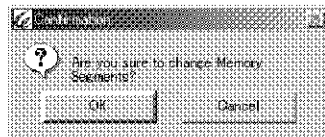


Figure 4-7 [Memory Segments] Change Inquiry Message Box

13. Select Wave1 from [Map Number] of [Load Waveform] in the [Waveform Setup] dialog box.
14. Verify that the [Auto Load] check box of [Load Waveform] on the [Waveform Setup] dialog box has been checked.
If it is not checked, touch the check box to check it.
15. Touch the [Load File] button in the [Waveform Setup] dialog box.
The [Select Waveform] dialog box will be displayed.
16. Open the “OPT74” directory in the [Select Waveform] dialog box and select the “OPT74.awv” file.
The selected file name will be displayed in the [Filename] text box.
17. Touch the [Load] button on the [Select Waveform] dialog box.
File loading will be started.
When file loading is completed, the [Select Waveform] dialog box will disappear from the screen.

CAUTION: *If the file size is large, loading takes considerable time.*

18. When the file is loaded, NO., the loaded file name and data size will be displayed in **[AWG Memory Mapping Information]** in the **[Waveform Setup]** dialog box. Check them for verification.
19. Touch the close button [×] on the **[Waveform Setup]** dialog box to close the dialog box.
20. Press the **START** button on the front panel.
The I and Q signals are output from the AWG.

MOD setting

21. The modulation On state is set by pressing the active application button **[MOD ON]**.

FREQ setting

22. Touch the **{FREQ}** button on the function bar.
23. Touch the **Frequency** key on the soft menu bar.
Entry box is displayed and the output frequency can be input.
24. Press **2**, **0**, **0**, **0**, and **M/n**.
The output frequency from the SG OUTPUT connector is set to 2000 MHz.

AMPL setting

25. Touch the **{AMPL}** button on the function bar.
26. Touch the **Amplitude** key on the soft menu bar.
The entry box is displayed and the output level can be input.
27. Press **0**, and **ENT**.
The output level from the SG OUTPUT connector is set to 0 dBm.
28. The output On state is set by pressing the active application button **[RF OUT ON]**.

Checking the SG OUTPUT signal by using the SA

29. Press the active application button **[SA↔SG]** to display the SA screen.
30. Touch the **{FREQ}** button on the function bar.
31. Press **2**, **0**, **0**, **0**, and **M/n**.
32. Touch the **{SPAN}** button on the function bar.

4.2.1 Burst Period Setting

33. Press **0**, and **M/n**.

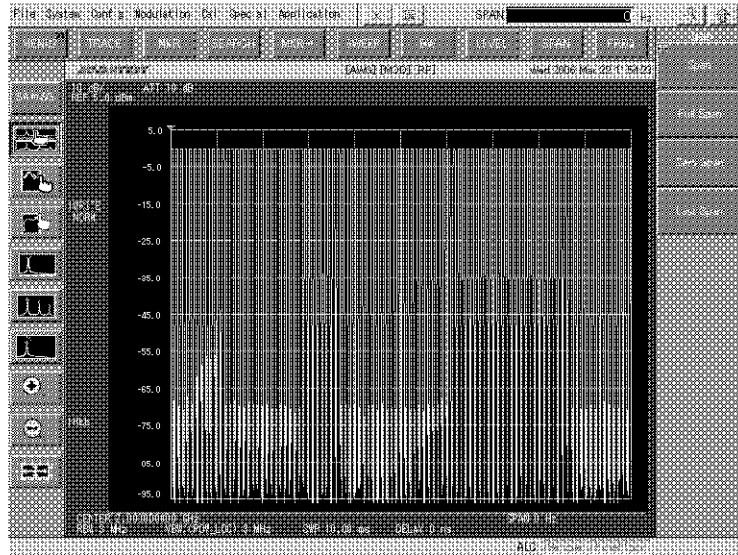


Figure 4-8 Example of Checking the SG OUTPUT Signal by Using the SA

34. Touch the **{SWEEP}** button in the function bar.

35. Touch the **Sweep time** key in the soft menu bar.

36. Press **0**, **.**, **2**, and **ENT**.

37. Touch the **Trigger Source** key in the soft menu bar.

38. Touch the **Link** key in the soft menu bar.

39. Touch the **Return** key in the soft menu bar.

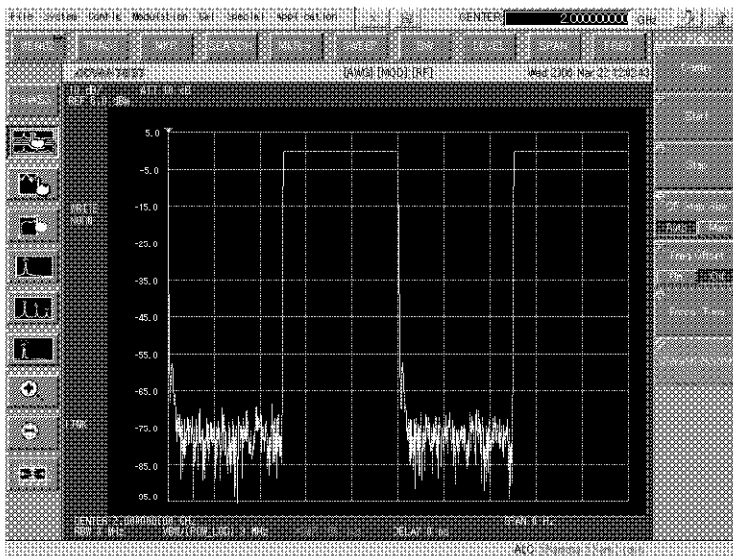
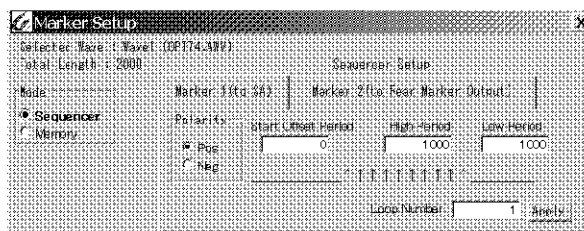


Figure 4-9 OPT74.awv Screen Output Default Settings

Changing the burst period

40. Press the active application button [**SA**↔**SG**] to display the SG screen.
41. Press the **STOP** button on the front panel.
No I and Q signals are output from the AWG.
42. Touch the {**AWG**} button in the function bar.
43. Touch the **Marker Setup** key on the soft menu bar.
The [**Marker Setup**] dialog box will be displayed.

Figure 4-10 [**Marker Setup**] Dialog Box

44. Verify that the [**Mode**] option button on the [**Marker Setup**] dialog box is set to [**Sequencer**].
If [**Memory**] has been selected, change it to [**Sequencer**].
45. Touch the [**Marker 1(to SA)**] tab.

4.2.1 Burst Period Setting

46. Verify that the **[Polarity]** option button on the **[Marker 1(to SA)]** tab is set to **[Pos]**.
If **[Neg]** has been selected, change it to **[Pos]**.
47. Touch the **[Start Offset Period]** text box on the **[Marker 1(to SA)]** tab.
The set value is displayed in a black/white inverted state.
48. Input as **[0]**, **[ENT]** using the ten-key pad.
0 will be input to the start offset period.
49. Touch the **[High Period]** text box on the **[Marker 1(to SA)]** tab.
The set value is displayed in a black/white inverted state.
50. Input as **[8]**, **[0]**, **[0]**, **[ENT]** using the ten-key pad.
800 will be input to the high period.
51. Touch the **[Low Period]** text box on the **[Marker 1(to SA)]** tab.
The set value is displayed in a black/white inverted state.
52. Input as **[1]**, **[2]**, **[0]**, **[0]**, **[ENT]** using the ten-key pad.
1200 will be input to the low period.
53. Touch the **[Loop Number]** text box on the **[Marker 1(to SA)]** tab.
The set value is displayed in a black/white inverted state.
54. Input as **[1]**, **[ENT]** using the ten-key pad.
1 will be input to the loop number.
55. Press the **[Apply]** button on the **[Marker 1(to SA)]** tab.
With the above steps, the values of the previously input **[Start Offset Period]**, **[High Period]**, **[Low Period]** and **[Loop Number]** are set.

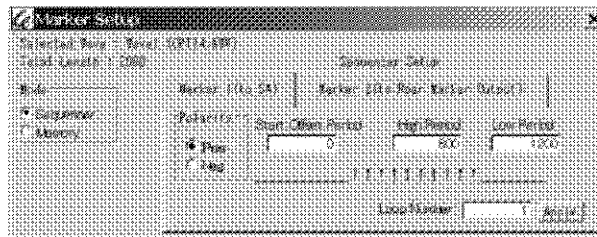


Figure 4-11 **[Marker Setup]** Dialog Box

56. Press the **[START]** button on the front panel.
In the OPT74, the signal output turns off when "Hi" is input in the RAMP IN connector.
Therefore, the output OFF period is decreased by decreasing the Hi period of the MARKER1 signal.

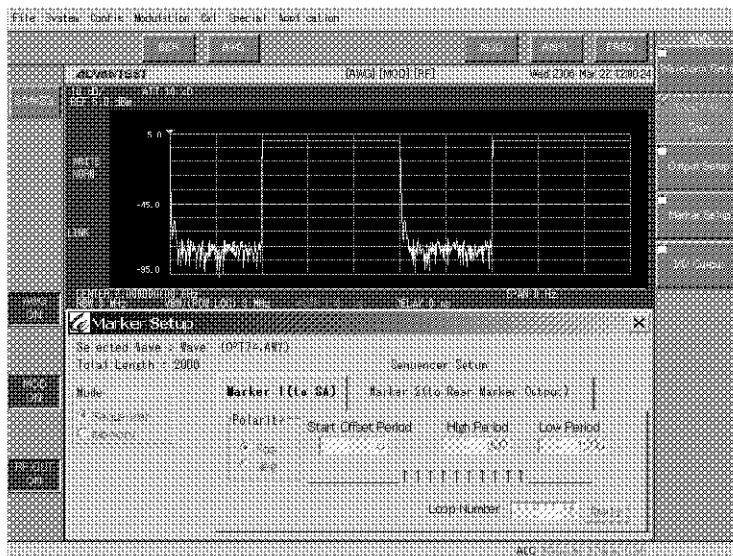


Figure 4-12 OPT74.awv Screen after Changing Burst Period

57. Press the **STOP** button on the front panel.
58. Touch the **Marker Setup** key in the soft menu bar.
59. Click on the [Neg] option for the [Polarity] button in the [Marker 1(to SA)] tab.
60. Press the **START** button on the front panel.

Because the marker output is inverted, the Hi period of the MARKER1 signal is increased and then the output OFF period is increased.
 Because the SA starts a sweep at a fall time of the MARKER1 signal, the waveform is displayed using the OFF output even if the marker output is inverted.

4.2.1 Burst Period Setting

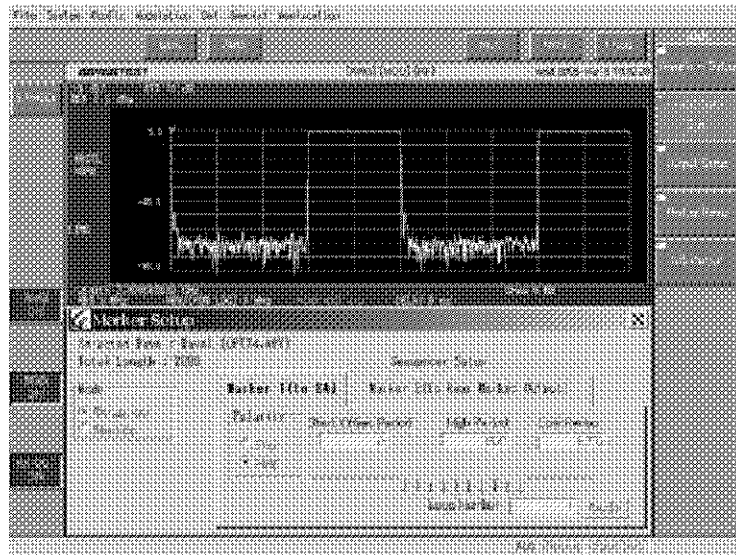


Figure 4-13 OPT74.awv Screen after Setting Marker to Neg

MEMO: By editing marker information in the header of a waveform file (.awv), the marker is set according to the edited marker information when the waveform file is loaded.

In the OPT74.awv file used in this example, the header is written as follows. Setting values are written in the MARKER1 line.


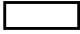
Use a text editor when adding or modifying the header of the waveform file. For more information, refer to the R3681 Series OPT72 User's Guide.

```
{COMMENT:OPT74 Performance Verification}
{DATE:2006/02/24;13:30:24}
{IQOUTPUT:FIX}
{IQFILTER:FLT2_5M}
{STARTTRIGGER:INT;POS}
{OUTPUTSEQUENCE:CONT}
{SAMPLINGFREQ:20000000.000000}
{MARKERMODE:SEQ}
{MARKER1:ON;POS;0;1000;1000;1}
{MARKER2:ON;POS;0;1000;1000;1}
```

5. MENU MAP, FUNCTIONAL EXPLANATION

This chapter describes the configurations and functions of soft keys displayed on the touch screen when this instrument is equipped with the pulse modulator option.

MEMO:

1. [...] Used to enclose a menu name, key name, item name in the dialog box, button name, or the name of selected items in lists and menus.
 2. {...} Shows a function button on the function bar.
 3.  Shows a soft key on the soft menu bar.
 4. A dialog box is surrounded by a broken line.
 5.  Shows a text box for numeric input.
 6. Operations are supposed to be made through a touch screen, and "touch" means to press a button or a key.
-

5.1 Menu Index

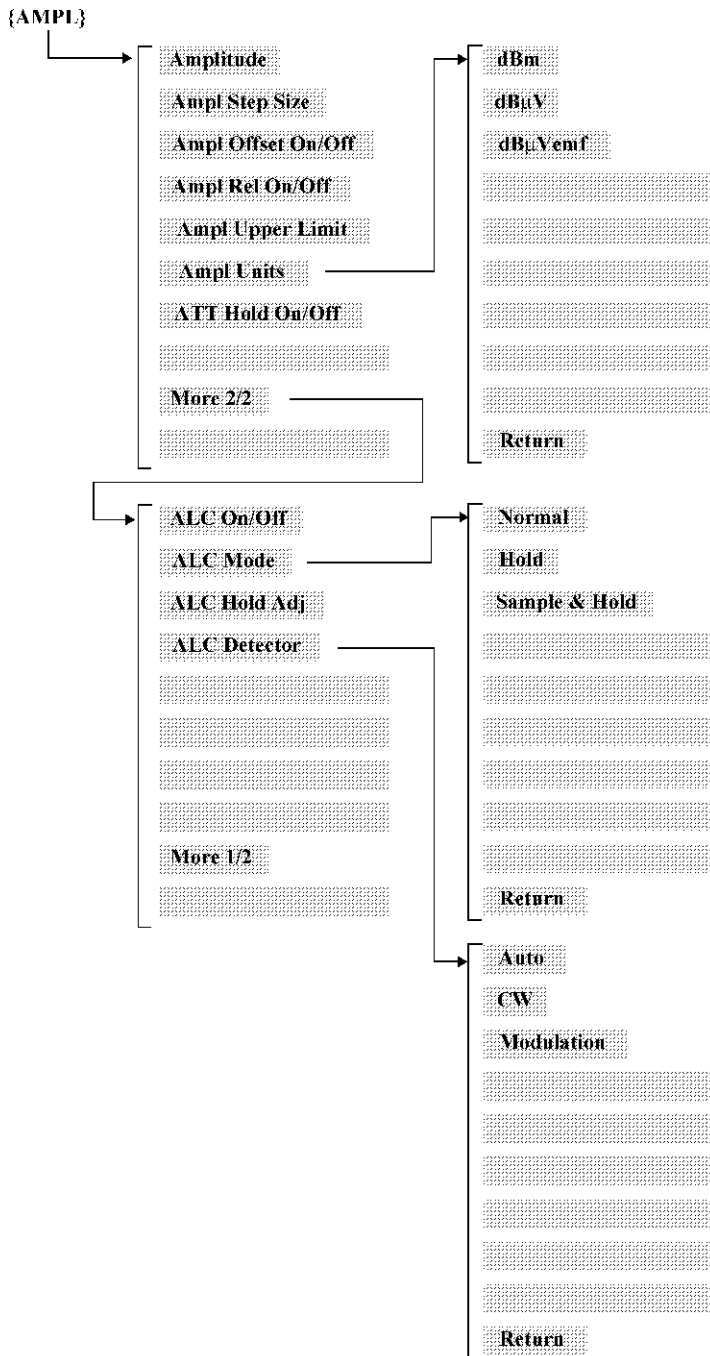
Operation Key	Pages
{AMPL}	5-2
ALC Detector	5-2
ALC Hold Adj	5-2
ALC Mode	5-2, 5-3
ALC On/Off	5-2
Ampl Offset On/Off	5-2
Ampl Rel On/Off	5-2
Ampl Step Size	5-2
Ampl Units	5-2
Ampl Upper Limit	5-2
Amplitude	5-2
ATT Hold On/Off	5-2
Auto	5-2
CW	5-2
dBm	5-2
dB μ V	5-2
dB μ Vemf	5-2
Hold	5-2, 5-3
Modulation	5-2
Normal	5-2, 5-3
Sample & Hold	5-2, 5-3

5.1.1 {AMPL}

5.1.1 {AMPL}

If the {AMPL} button is touched, the soft keys, which relate to the RF signal output level setting, are displayed on the soft menu bar.

In the OPT74 Pulse Modulator, **Sample & Hold** in **ALC Mode** is added.



ALC Mode	Displays the menu for selecting the ALC mode of the RF signal.
Normal	Sets ALC to the Normal mode.
Hold	Sets ALC to the Hold mode.
Sample & Hold	Sets ALC to the Sample and Hold mode.
Return	Returns to the previous layer menu.

6. SCPI COMMAND REFERENCE

This chapter describes the command reference of this instrument.

MEMO: *For an outline of the remote control, basic measurement procedures, etc., refer to the attached manual "Programming Guide."*

6.1 Command Reference Format

This section describes the format of explanations of each command described in this chapter.

Explanations of each command include the following items:

- Function
- Command
- Parameter
- Query

- [Command]

The command shows the syntax of a command sent from the external controller to this instrument. The syntax consists of a command part and a parameter part. The command part and parameter part are delimited by a space.

When there are multiple parameters, they are delimited by commas (.). The three points (...) displayed between commas represent the parameter(s) omitted in the position.

For example, the description <numeric value 1>, ..., <numeric value 4> shows that four parameters, <numeric value 1>, <numeric value 2>, <numeric value 3>, and <numeric value 4>, are required.

When the parameter is a character string type such as <character string>, <character string 1>, the parameter must be enclosed in double quotation marks (" "). When the parameter is <block>, it shows the block format data.

The part written in lowercase alphabetical characters in the syntax shows that it can be omitted.

For example, ":CALibration:CABLe" can be abbreviated to ":CAL:CABL".

The marks used in the syntax are defined as follows:

<>:	Shows a parameter required for sending a command.
[]:	Shows that the command is optional. It can be omitted.
{ }:	Shows that only one item is required to be selected from multiple items.
:	Written in curly brackets {..} and used as a delimiter for multiple items.
<ch>:	Written in the command header and shows the target input channel number of the command. The channel number can be omitted. However, when it is written, the channel number 1 is selected.
<bch>:	Written in the command header and indicates the BER measurement target channel of the command. The BER measurement channel number can be omitted. However, when it is written, channel number 1 is selected.

6.1 Command Reference Format

- <mk>: Written in the command header and indicates the target marker of the command. The marker number can be omitted. However, when it is written, a value from 1 to 2 is selected.
[{1|2}]
- <mno>: Written in the command header and indicates the Waveform Memory number that is the target of the command. The Waveform Memory number can be omitted. However, when it is written, a value from 1 to 4 is selected.
[{1|2|3|4}]

- [Function]

Indicates the outline of the action of this instrument when the command is executed.

- [Parameter]

Describes a parameter required for sending a command.

When the parameter is a numeric type or a character (string) type, it is enclosed in angle brackets (<>).

When the parameter is an optional type, it is enclosed in curly brackets { }.

In this manual, parameter types are described in the following formats:

- < int >: A numeric value that can be input in the format NR1, NR2, or NR3 and rounded to an integer in this instrument
- < real >: A numeric value that can be input in the format NR1, NR2, or NR3 and rounded to a valid-digit real number in this instrument
- < bool >: String of OFF|ON
- < str >: A character string or alphanumeric symbols enclosed in quotation (' ') or double quotation (" ") marks
- < block >: Block data type
The content of data is an 8-bit binary data array
- < type >: Character data selected from multiple types

- [Query]

When there is a query reply to the command, the data format used for reading the query is described.

Each parameter to be read is enclosed in curly brackets { }. When multiple items delimited by a vertical bar (|) exist in curly brackets { }, only one of those items is read out. When multiple parameters are read out, they are delimited by commas (.). The three points (...) displayed between commas represent the data omitted in the position. For example, the description <numeric value 1>, ..., <numeric value 4> shows that four parameters <numeric value 1>, <numeric value 2>, <numeric value 3>, and <numeric value 4> are read.

When the parameter to be read is enclosed in square brackets [], the parameter may be omitted, depending on the measurement result, etc.

For each read-out parameter, a unit such as "dBm" is displayed in the column for the unit, to show the unit for the parameter value. However, only when the parameter is described in a level unit "dBm," the level unit selected at that time will be applied to the parameter.

6.2 Common Commands

Function	Command	Parameter	Query	Remarks
Clears the status byte and related data	*CLS	---	---	
Macro definition for GET	*DDT	<block>	<block>	*1
Sets the standard event status enable register	*ESE	<int>	<int>	
Reads the standard event status register	*ESR?	---	<int>	
Device inquiry	*IDN?	---	<str>	*2
Notice of completion of running operations	*OPC	---	1	
Recalls device settings	*RCL	<int>	---	
Resets the device	*RST	---	---	
Saves the device settings	*SAV	<int>	<int>	
Sets the service request enable register	*SRE	<int>	<int>	
Reads the status byte register	*STB?	---	<int>	
Self-test execution and inquiry for the results	*TST?	---	<int>	
Waits for the completion of all running operations	*WAI	---	---	

*1: If the *DDT? command is executed when the macro is undefined, zero-length block data (#10) is returned.

*2: <str> is output in the format of "maker name, model name, serial number, version number."

6.3 AMPL Button

6.3 AMPL Button

In the OPT74 Pulse Modulator, **Sample & Hold** in **ALC Mode** is added.

Function	Command	Parameter	Query	Unit	Remarks
ALC mode NORMAL/ HOLD/SH	[[:SOURce<ch=1 2>] :SG:AMPLitude:ALC:MODE	NORMAL HOLD SH	NORMAL HOLD SH	--	

7. SPECIFICATIONS

Item	Specification	Remarks
ON/OFF ratio	> 60 dB	
Rise time and fall time (10 to 90 %)	< 0.5 μ sec	
External modulation signal input (RAMP IN)	BNC (f) on the rear panel TTL level (negative logic)	
MARKER1 output (MARKER1 OUT)	BNC (f) on the rear panel TTL level	

8. PERFORMANCE VERIFICATION

8.1 Overview

8.1.1 Introduction

This chapter describes the performance verification procedure following the order of the items listed in Table 8-1.

Table 8-1 Performance Verification List

Test No.	Test item
8.3.1	MARKER1 OUT Output Waveform
8.3.2	Pulse Modulator Output Waveform

1. Testing environment and conditions

Conduct performance verification under the following conditions.

- In a 20 °C to 30 °C environment, after turning on the power and letting it warm up for 30 minutes or longer
- After automatic calibration has been performed

2. Required measurement instruments

Table 8-2 shows the list of instruments required for all tests.

Instruments required for each test are also listed in each test procedure.

If the user's instruments meet the specifications described in the table, those instruments can be used instead of the recommended models.

3. Performance verification period

It is recommended that the performance verification is conducted once a year to check whether the pulse modulator option meets its specifications.

4. Performance verification sheets

Performance verification sheets are provided at the end of this chapter for the user to record the values which are measured in each performance verification test.

When conducting performance verification, it is recommended that copies of the sheets be made for the test results, and the sheets stored as test records.

5. Notation used in the performance verification procedure

The soft keys on the touch panel are mainly used to operate the pulse modulator option as well as the signal analyzer.

Notation of operations described in this chapter is as follows:

- When continuous operations are described, commas are inserted between operations.
- Notation used when switching between settings such as On/Off or Auto/Man is described in the following examples:

(Example) Setting the RBW to Man: **RBW Auto/Man(Man)**

8.1.2 Required Instruments

8.1.2 Required Instruments

Table 8-2 show a list of required instruments.

Instruments which are required in all tests are listed. Instruments which are required for individual tests are also listed in each test.

If the user's instruments meet the specifications described in the table, those instruments can be used instead of the recommended models.

Table 8-2 Required Instruments List

No.	Instrument	Requirements	Recommended model	Quantity
1	Oscilloscope	Band: >500 MHz Input: 1 M Ω / 50 Ω , 2 CH Error in delay between channels: <100 ps	TDS5052 Tektronix	1
2	BNC cable	Impedance: 50 Ω Connector: BNC(m)-BNC(m) Length: 1.5 m	A01037-1500 ADVANTEST	2
3	SMA cable	Impedance: 50 Ω Connector: SMA(m)-SMA(m) Length: 1.0 m	SF104/2x11SMA-451 SUHNUR	1
4	Adapter	Connector: SMA(f)-SMA(f)	HRM-501 Hirose Electric Co., Ltd	2
5	Adapter	Connector: N(m)-SMA(f)	HRM-554S Hirose Electric Co., Ltd	1
6	Adapter	Connector: SMA(m)-BNC(f)	HRM-517(09) Hirose Electric Co., Ltd	1

NOTE: In the R3671, another N(m)-SMA(f) adapter is used instead of the SMA(f)-SMA(f) adapter.

8.2 Loading Waveform Data

This section describes procedures for loading the waveform data, which is required for the performance verification, to the waveform storing memory of the digital signal generation option.

The waveform file is stored in advance in the following directory of the R3681 series built-in hard disk.

D:\Advantest\R3681\Waveform\

Refer also to 4.2.1, "Burst Period Setting" in which operation examples of the waveform data loading is described.

Procedure

1. Select the SG+AWG option.
Operation: [Config]→[SG+AWG Option]
2. Display the setting dialog box which is related to loading the waveform data.
Operation: [AWG], [Waveform Setup]
3. Verify that Auto Load is set.
If Auto Load is not set, touch the checkbox to set Auto Load.
Operation: [Load Waveform], [Auto Load]
4. Display the dialog box which specifies the waveform file to be loaded.
Operation: [Waveform Setup], [Load File]
5. Touch the waveform file to be loaded to select it.
6. Waveform data loading starts.
Operation: [Select Waveform], [Load]
7. When the waveform data loading is complete, the [Select Waveform] dialog box closes and the number, the loaded file name, and data size are displayed in [AWG Memory Mapping Information] of the [Waveform Setup] dialog box.
8. After all waveform data are loaded, close the [Waveform Setup] dialog box.
Operation: [Waveform Setup], [X]

8.3 Pulse Modulator Performance Verification Procedure

8.3 Pulse Modulator Performance Verification Procedure

This section describes the performance verification procedure following the order of the items listed in Table 8-1.

8.3.1 MARKER1 OUT Output Waveform

[Overview]

When the pulse modulator option is installed, the MARKER1 signal is output to the connector on the rear panel and is also connected to the trigger input in the SA of the R3681 series.

This section describes how to verify the MARKER1 signal waveform that is output to the connector on the rear panel.

[Required instruments]

Instrument	Quantity	Recommended model
Oscilloscope	1	TDS5052
Connector SMA(m)-BNC(f)	1	HRM-517(09) Hirose Electric Co., Ltd
BNC cable BNC(m)-BNC(m)	2	A01037-1500 Advantest

[Connection diagram]

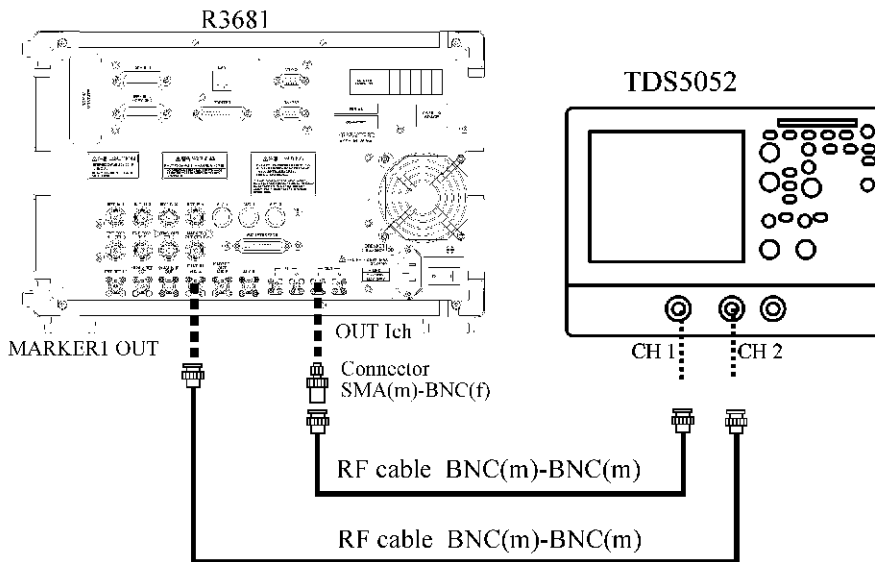


Figure 8-1 Connection Diagram for MARKER1 OUT Output Waveform Verification

[Test procedure]

Initialization

1. Preset this instrument.

Operation: **[Special]**→**[Preset]**→**[All]**

Connecting the instruments

2. Connect the instruments as shown in Figure 8-1.

Setting the oscilloscope

3. Set the oscilloscope as follows:

Vertical axis CH1 and CH2

 Input coupling: DC

 Scale: CH1; 500 mV/div, CH2; 2 V/div

 Input impedance: 1 M Ω

Horizontal axis

 Sweep: 20 μ s/div

Trigger

 Source: CH1

 Coupling: DC

 Slope: Positive

 Level: 0 V

 Mode: Auto

Setting the AWG option

4. Referring to 8.2, "Loading Waveform Data," load the waveform file SINWV1.

5. Set the I/Q output mode to Fix Gain Path.

Operation: **I/Q Output**, **[I/Q Output]**, **[Fix Gain Path (1V_{p-p})]**

8.3.1 MARKER1 OUT Output Waveform

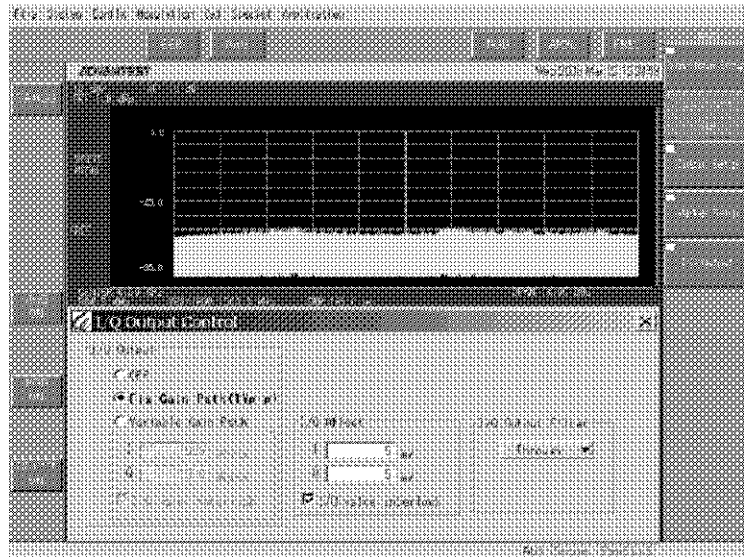


Figure 8-2 I/Q Output Mode Setting

6. After the setting is completed, close the **[I/Q Output Control]** dialog box.
Operation: **[I/Q Output Control]**, [**X**]
7. Set the marker 1 output to ON.
Operation: **Output Setup**, [**Marker1**], [**ON**]

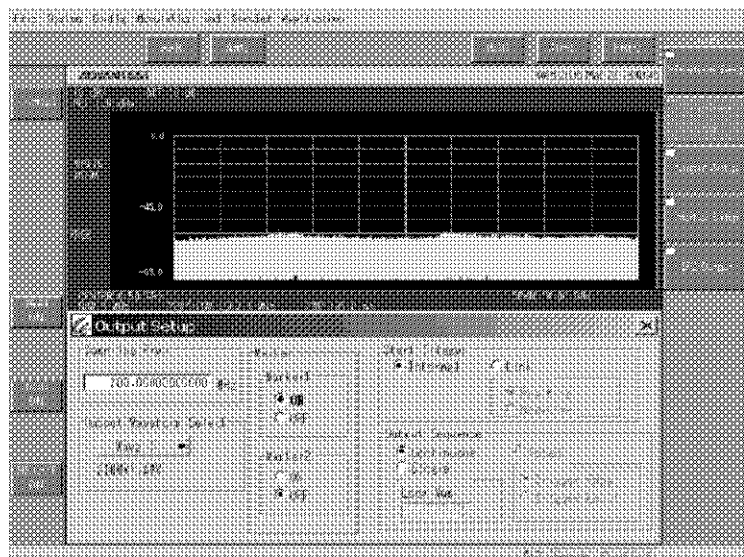


Figure 8-3 Marker Output Setting

8. After the setting is completed, close the **[Output Setup]** dialog box.
Operation: **[Output Setup]**, [**X**]

Verifying the sequencer marker settings

9. Set the marker mode to the sequencer marker.
Operation: **Marker Setup**, **[Mode]**, **[Sequencer]**
10. Set the length of the high period of the sequencer marker to 10,000 points.
Operation: **[Marker1 (to Rear Marker Output)]**, **[High Period]**, **[1]**, **[0]**, **[0]**, **[0]**, **[0]**, **[0]**, **[ENT]**
11. Set the length of the low period of the sequencer marker to 10,000 points.
Operation: **[Low Period]**, **[1]**, **[0]**, **[0]**, **[0]**, **[0]**, **[0]**, **[ENT]**
12. Apply the settings from marker 1.
Operation: **[Apply]**
13. Output the signal from the AWG.
Operation: **[START]**

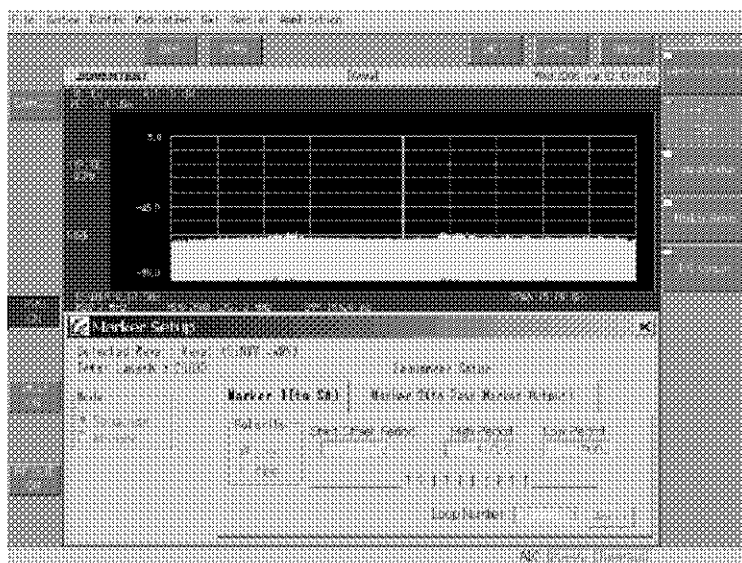


Figure 8-4 Sequencer Marker Setting

14. Verify that the marker, which is high in a period in which the output signal is positive, is output as shown in Figure 8-5. (Verification of positive marker polarity)
15. Stop the signal output.
Operation: **[STOP]**
16. Set the polarity of marker 1 to negative.
Operation: **[Polarity]**, **[Neg]**, **[Apply]**
17. Output the signal.
Operation: **[START]**

8.3.1 MARKER1 OUT Output Waveform

- 18. Verify that the marker, which is high in a period in which the output signal is negative, is output as shown in Figure 8-6. (Verification of negative marker polarity)
- 19. Stop the signal output.
Operation: **STOP**

Verifying the memory marker

- 20. Set the marker mode to the memory marker.
Operation: **[Marker Setup], [Mode], [Memory]**
- 21. Output the signal from the AWG.
Operation: **START**
- 22. Verify that the marker, which repeats a high level and a low level for every 1/4 period of the output signal, is output as shown in Figure 8-7.
- 23. Stop the signal output.
Operation: **STOP**

PASS/FAIL judgment

- 24. If output waveforms in steps 14, 18, and 22 are correct, the result is PASS.

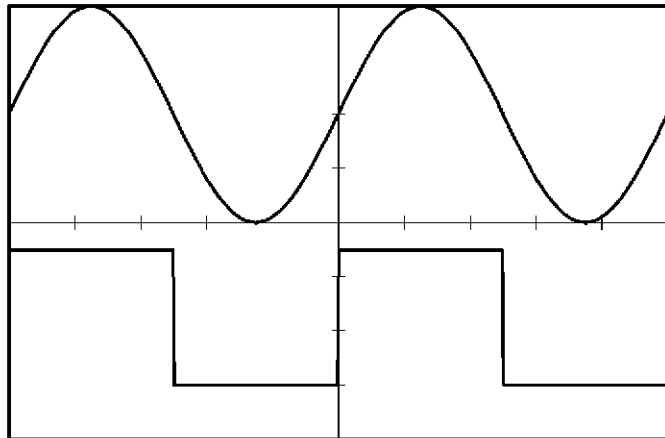


Figure 8-5 Waveform Verification for the Positive Sequencer Marker

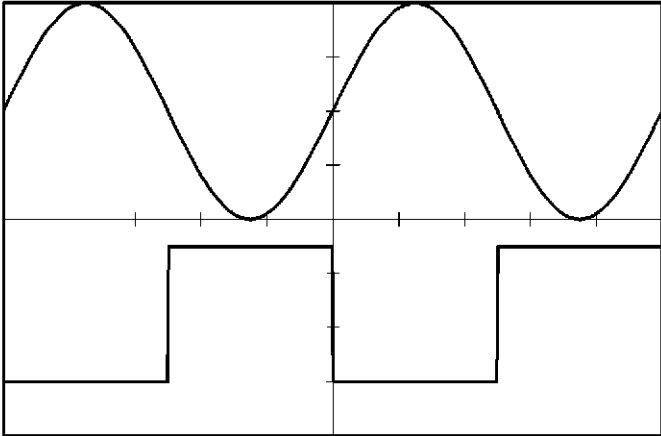


Figure 8-6 Waveform Verification for the Negative Sequencer Marker

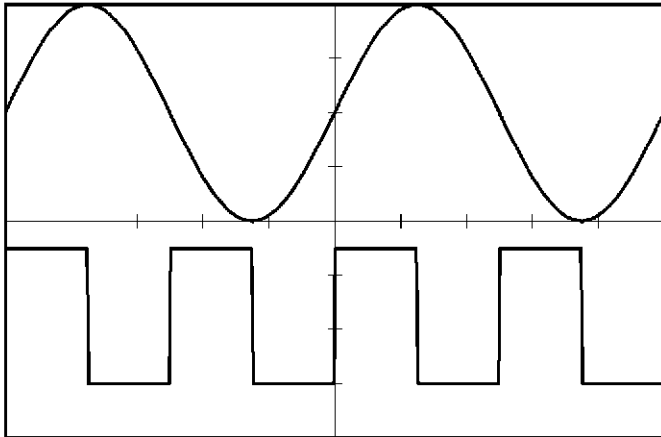


Figure 8-7 Waveform Verification for the Memory Marker

8.3.2 Pulse Modulator Output Waveform

8.3.2 Pulse Modulator Output Waveform

[Overview]

This section describes how to verify whether the ON/OFF ratio, which results from switching the SG output signal by using the added marker 1 output, is sufficient.

This section also describes how to measure a waveform to verify that a rise time and a fall time when the output signal is switched ON and OFF are within the specifications.

[Specifications]

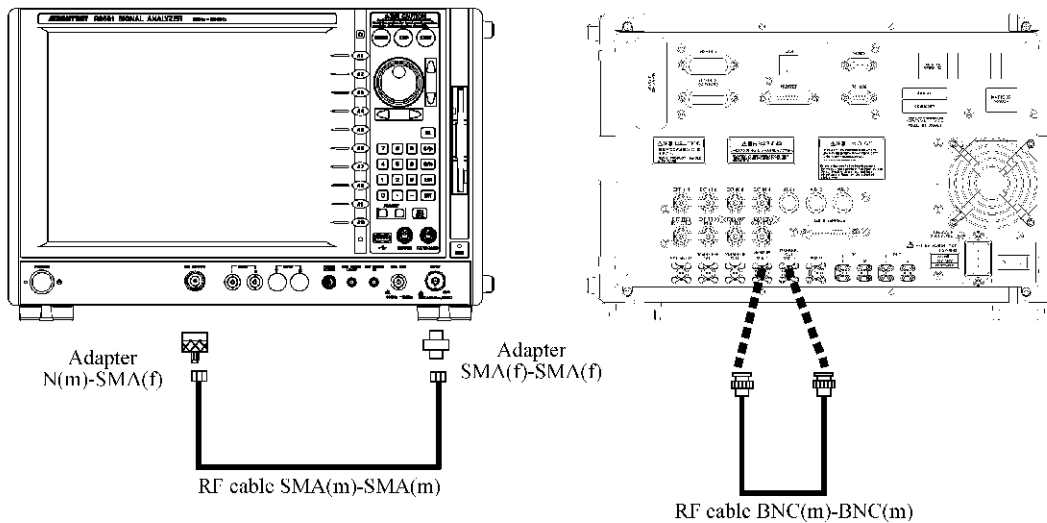
Residual DC offset: ON/OFF ratio: > 60dB
 Rise time: < 0.5 μs (10% to 90%)
 Fall time: < 0.5 μs (10% to 90%)

[Required instruments]

Product	Quantity	Recommended model
BNC cable BNC(m)-BNC(m)	1	A01037-1500 Advantest
SMA cable SMA(m)-SMA(m)	1	SF104/2x11SMA-451 1000mm SUHNUR
Adapter SMA(f)-SMA(f)	1	HRM-501 Hirose Electric Co., Ltd
Adapter N(m)-SMA(f)	1	HRM-554S Hirose Electric Co., Ltd

NOTE: In the R3671, another N(m)-SMA(f) adapter is used instead of the SMA(f)-SMA(f) adapter.

[Connection diagram]



NOTE: In the R3671, another N(m)-SMA(f) adapter is used instead of the SMA(f)-SMA(f) adapter.

Figure 8-8 Pulse Modulator Output Waveform Verification Connection Diagram

[Test procedure]

Initialization

1. Preset this instrument.
Operation: [**Special**]→[**Preset**]→[**All**]

Connecting the instruments

2. Connect the instruments as shown in Figure 8-8.

Selecting an option from the R3681

3. Select the SG+AWG option.
Operation: [**Config**]→[**SG+AWG Option**]

Setting the AWG option and measurement

4. Referring to 8.2, "Loading Waveform Data," and load the waveform file OPT74\OPT74.awv.
5. Output the AWG signal.
Operation: **START**

SG setting

6. Set the frequency to 2 GHz.
Operation: {**FREQ**}, **Frequency**, **2**, **G/p**
7. Set the output level to 0 dBm.
Operation: {**AMPL**}, **Amplitude**, **0**, **ENT**
8. Set MOD to ON.
Operation: [**MOD ON**]
9. Set the RF output to ON.
Operation: [**RF OUT ON**]

Measuring the ON/OFF ratio by using the SA function

10. Activate the SA.
Operation: [**SA↔SG**]
11. Set the center frequency to 2 GHz.
Operation: {**FREQ**}, **Center**, **2**, **G/p**

8.3.2 Pulse Modulator Output Waveform

12. Set the frequency span to ZERO SPAN.
Operation: {SPAN}, **Zero Span**
13. Set the Sweep Time to 200 μ s.
Operation: {Sweep}, **Sweep Time Auto/Man** (Man), **2**, **0**, **0**, **k/ μ**
14. Set the Trigger Source to Link.
Operation: **Trigger Source**, **Link**, **Return**
15. Set the RBW to 10 MHz.
Operation: {BW}, **RBW Auto/Man** (Man), **1**, **0**, **M/n**
16. Set the trace detector to RMS.
Operation: {TRACE}, **Trace Detector**, **Average RMS**
17. Set the marker on the waveform by using the marker search function.
Operation: {SEARCH}
18. Set the delta marker to ON and move the marker to the Burst OFF period of the waveform.
Operation: {MKR}, **Delta Marker**, **4**, **0**, **k/ μ**
19. Read the value of the delta marker. (ON/OFF ratio)
Record the measurement result in the record sheet. If the result is 60 dB or more, the result is PASS.

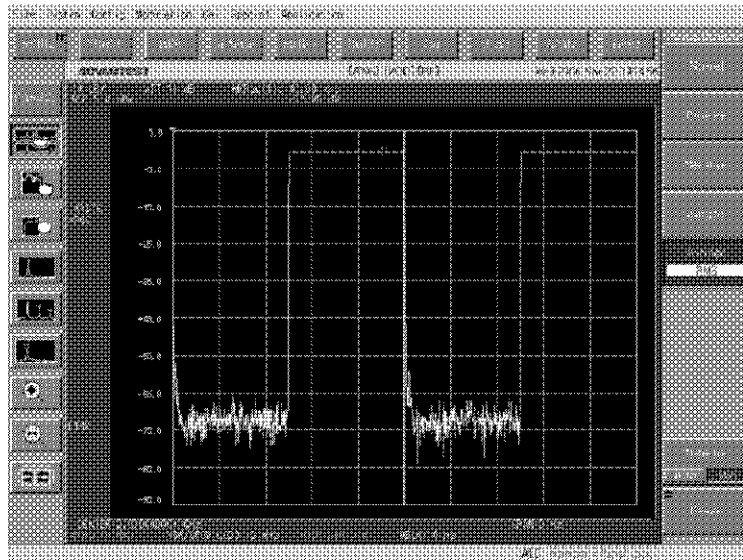


Figure 8-9 ON/OFF Ratio Measurement

20. Set the delta marker to OFF.
Operation: **Δ Marker On/Off** (Off)

Measuring a rise time and a fall time by using the SA function

21. Set the Sweep Time to 1 μ s.
Operation: {SWEEP}, **Sweep Time Auto/Man** (Man), **1**, **k/ μ**
22. Set the marker on the waveform by using the marker search function.
Operation: {SEARCH}
23. Set the marker to a waveform where the level is 6 dB lower than the peak level by using the XdB Down function. Make a note of the marker time T6dB[nsec].
Operation: {MENU2}, {MEAS}, **XdB Down**, **6**, **ENT**
24. Set the marker to a waveform where the level is 54 dB lower than the peak level by using the XdB Down function. Make a note of the marker time T54dB[nsec].
Operation: **5**, **4**, **ENT**

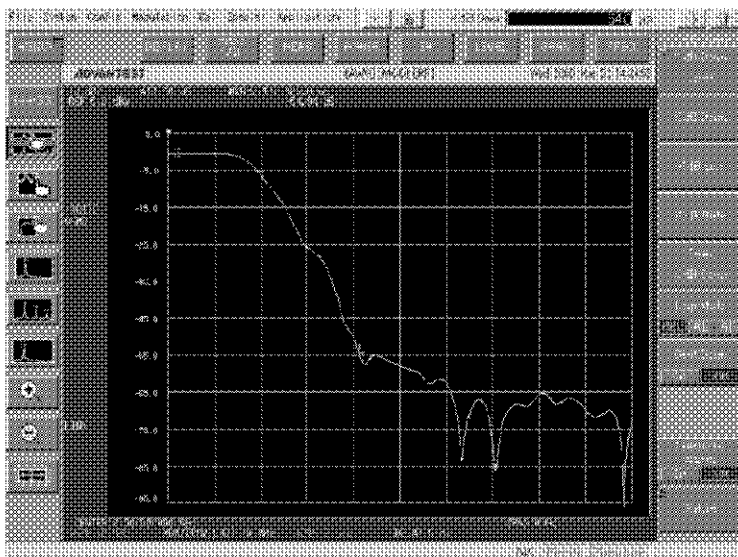


Figure 8-10 Fall Time Measurement

25. Record the result of "T54dB - T6dB" in the fall time section of the record sheet. If the result is 0.5 μ s or less, the result is PASS.
26. Set the delta marker to OFF.
Operation: {MENU1}, {MKR}, **Δ Marker On/Off** (Off)
27. Set the Trigger Slope to "-".
Operation: {SWEEP}, **Trigger Slope +/-** (-)
28. Set the marker on the waveform by using the marker search function.
Operation: {SEARCH}
29. Set the marker to a waveform where the level is 6 dB lower than the peak level by using the XdB Down function. Make a note of the marker time T6dB[nsec].
Operation: {MENU2}, {MEAS}, **XdB Down**, **6**, **ENT**

8.3.2 Pulse Modulator Output Waveform

30. Set the marker to a waveform where the level is 54 dB lower than the peak level by using the XdB Down function. Make a note of the marker time T54dB[nsec].

Operation: **5**, **4**, **ENT**

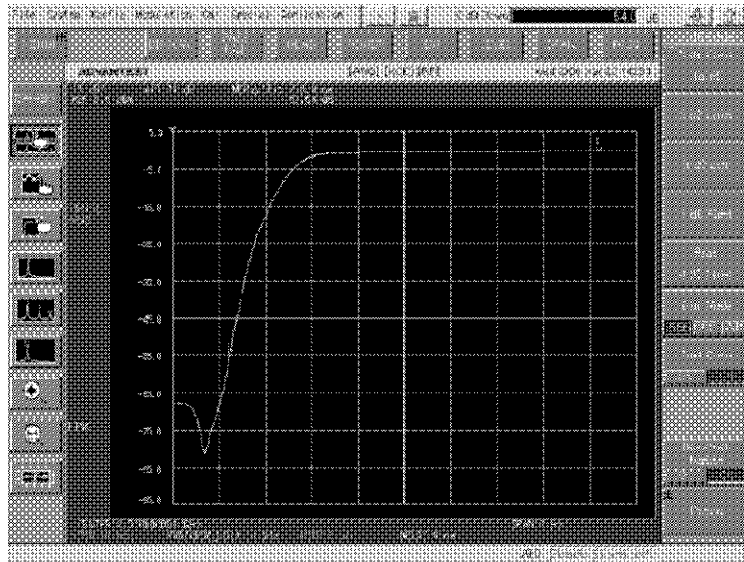


Figure 8-11 Rise Time Measurement

31. Record the result of "T54dB - T6dB" in the rise time section of the record sheet. If the result is 0.5 μ s or less, the result is PASS.

8.4 Pulse Modulator Performance Verification Record Sheets

Measured item	Specification (Min.)	Measured value	Specification (Max.)	Pass/Fail
MARKER1 output				
ON/OFF ratio	60 dB			
Fall time			0.5 μ s	
Rise time			0.5 μ s	

APPENDIX

A.1 Waveform File Configuration

A waveform file is composed of the header, which includes a file generation date and information on settings for the AWG, and the waveform data part.

Text data is used for descriptions in the header, and binary data is used for descriptions in the waveform data part.

Header
Comments, a file generation date and settings for the AWG are described.
Waveform data part
IQ data is stored. 32-bit frames are used to store I and Q data in alternating sequence (IQIQ...).

MEMO: *Unless setting information is written in the header, the settings are not reflected in the AWG*

IMPORTANT: *A header is not always required for waveform files. A waveform file can be configured only with waveform data, without a header.*

A.2 Header Syntax

A.2 Header Syntax

In the OPT74 Pulse Modulator, **Sample & Hold** in **ALC Mode** is added.

- ALC Mode
Enter a ALC mode in this field.

Syntax	Description example
{ALCMOD:mode}	{ALCMOD:SH}
mode: NORM/HOLD/SH	In this example, the Sample and Hold is selected as the ALC mode.

A.3 Error Codes

No error code is added by installing the OPT74 Pulse Modulator in this instrument.

ALPHABETICAL INDEX

<p style="text-align: center;">[Symbol]</p> <p>{AMPL} 5-2</p> <p style="text-align: center;">[A]</p> <p>ALC Detector 5-2</p> <p>ALC Hold Adj 5-2</p> <p>ALC Mode 5-2, 5-3</p> <p>ALC On/Off 5-2</p> <p>AMPL Button 6-4</p> <p>Ampl Offset On/Off 5-2</p> <p>Ampl Rel On/Off 5-2</p> <p>Ampl Step Size 5-2</p> <p>Ampl Units 5-2</p> <p>Ampl Upper Limit 5-2</p> <p>Amplitude 5-2</p> <p>APPENDIX A-1</p> <p>ATT Hold On/Off 5-2</p> <p>Auto 5-2</p> <p style="text-align: center;">[B]</p> <p>Burst Period Setting 4-2</p> <p style="text-align: center;">[C]</p> <p>Command Reference Format 6-1</p> <p>Common Commands 6-3</p> <p>Conventions of Notation Used in This Document 1-3</p> <p>CW 5-2</p> <p style="text-align: center;">[D]</p> <p>dBm 5-2</p> <p>dBμV 5-2</p> <p>dBμVemf 5-2</p> <p style="text-align: center;">[E]</p> <p>Electromagnetic Interference 2-3</p> <p>Error Codes A-3</p> <p>EXAMPLES OF OPERATIONS 4-1</p> <p style="text-align: center;">[F]</p> <p>FUNCTIONAL EXPLANATION 5-1</p> <p style="text-align: center;">[G]</p> <p>Getting the Software Running with Stability 2-2</p>	<p style="text-align: center;">[H]</p> <p>Handling the Touch Screen 2-2</p> <p>Hard Disk Drive 2-1</p> <p>Header Syntax A-2</p> <p>Hold 5-2, 5-3</p> <p style="text-align: center;">[I]</p> <p>If Faults Should Occur 2-1</p> <p>INTRODUCTION 1-1</p> <p>Introduction 8-1</p> <p style="text-align: center;">[L]</p> <p>Limitations Imposed when Using Windows XP 2-4</p> <p>Loading Waveform Data 8-3</p> <p>Locating This Instrument 3-2</p> <p style="text-align: center;">[M]</p> <p>MARKER1 OUT Output Waveform 8-4</p> <p>Menu Index 5-1</p> <p>MENU MAP 5-1</p> <p>Modulation 5-2</p> <p style="text-align: center;">[N]</p> <p>Normal 5-2, 5-3</p> <p style="text-align: center;">[O]</p> <p>Operating Environment 3-2</p> <p>Operating Method 4-2</p> <p>Organization of This Document 1-1</p> <p>Other Manuals Pertaining to This Instrument 1-2</p> <p>Overcurrent Protection 2-1</p> <p>Overview 8-1</p> <p style="text-align: center;">[P]</p> <p>PERFORMANCE VERIFICATION 8-1</p> <p>PRE-OPERATION TIPS 2-1</p> <p>Prevention of Electrostatic Buildup 3-3</p> <p>Product Overview 1-2</p> <p>Pulse Modulator Output Waveform 8-10</p> <p>Pulse Modulator Performance Verification Procedure 8-4</p> <p>Pulse Modulator Performance Verification Record Sheets 8-15</p> <p style="text-align: center;">[R]</p> <p>Registered Trademarks 1-4</p>
---	---

Alphabetical Index

Removing of Case 2-1
Required Instruments 8-2

[S]

Sample & Hold 5-2, 5-3
SCPI COMMAND REFERENCE 6-1
SETUP 3-1
SPECIFICATIONS 7-1

[T]

The Name and Functions of
Each Component on The Rear Panel 4-1
Tip on Transportation 2-3
Trademarks 1-4

[U]

Unpacking Inspection 3-1

[W]

Waveform File Configuration A-1

IMPORTANT INFORMATION FOR ADVANTEST SOFTWARE

PLEASE READ CAREFULLY: This is an important notice for the software defined herein. Computer programs including any additions, modifications and updates thereof, operation manuals, and related materials provided by Advantest (hereafter referred to as "SOFTWARE"), included in or used with hardware produced by Advantest (hereafter referred to as "PRODUCTS").

SOFTWARE License

All rights in and to the SOFTWARE (including, but not limited to, copyright) shall be and remain vested in Advantest. Advantest hereby grants you a license to use the SOFTWARE only on or with Advantest PRODUCTS.

Restrictions

- (1) You may not use the SOFTWARE for any purpose other than for the use of the PRODUCTS.
- (2) You may not copy, modify, or change, all or any part of, the SOFTWARE without permission from Advantest.
- (3) You may not reverse engineer, de-compile, or disassemble, all or any part of, the SOFTWARE.

Liability

Advantest shall have no liability (1) for any PRODUCT failures, which may arise out of any misuse (misuse is deemed to be use of the SOFTWARE for purposes other than its intended use) of the SOFTWARE. (2) For any dispute between you and any third party for any reason whatsoever including, but not limited to, infringement of intellectual property rights.

LIMITED WARRANTY

1. Unless otherwise specifically agreed by Seller and Purchaser in writing, Advantest will warrant to the Purchaser that during the Warranty Period this Product (other than consumables included in the Product) will be free from defects in material and workmanship and shall conform to the specifications set forth in this Operation Manual.
2. The warranty period for the Product (the "Warranty Period") will be a period of one year commencing on the delivery date of the Product.
3. If the Product is found to be defective during the Warranty Period, Advantest will, at its option and in its sole and absolute discretion, either (a) repair the defective Product or part or component thereof or (b) replace the defective Product or part or component thereof, in either case at Advantest's sole cost and expense.
4. This limited warranty will not apply to defects or damage to the Product or any part or component thereof resulting from any of the following:
 - (a) any modifications, maintenance or repairs other than modifications, maintenance or repairs (i) performed by Advantest or (ii) specifically recommended or authorized by Advantest and performed in accordance with Advantest's instructions;
 - (b) any improper or inadequate handling, carriage or storage of the Product by the Purchaser or any third party (other than Advantest or its agents);
 - (c) use of the Product under operating conditions or environments different than those specified in the Operation Manual or recommended by Advantest, including, without limitation, (i) instances where the Product has been subjected to physical stress or electrical voltage exceeding the permissible range and (ii) instances where the corrosion of electrical circuits or other deterioration was accelerated by exposure to corrosive gases or dusty environments;
 - (d) use of the Product in connection with software, interfaces, products or parts other than software, interfaces, products or parts supplied or recommended by Advantest;
 - (e) incorporation in the Product of any parts or components (i) provided by Purchaser or (ii) provided by a third party at the request or direction of Purchaser or due to specifications or designs supplied by Purchaser (including, without limitation, any degradation in performance of such parts or components);
 - (f) Advantest's incorporation or use of any specifications or designs supplied by Purchaser;
 - (g) the occurrence of an event of force majeure, including, without limitation, fire, explosion, geological change, storm, flood, earthquake, tidal wave, lightning or act of war; or
 - (h) any negligent act or omission of the Purchaser or any third party other than Advantest.
5. **EXCEPT TO THE EXTENT EXPRESSLY PROVIDED HEREIN, ADVANTEST HEREBY EXPRESSLY DISCLAIMS, AND THE PURCHASER HEREBY WAIVES, ALL WARRANTIES, WHETHER EXPRESS OR IMPLIED, STATUTORY OR OTHERWISE, INCLUDING, WITHOUT LIMITATION, (A) ANY WARRANTY OF MERCHANTABILITY OR FITNESS FOR A PARTICULAR PURPOSE AND (B) ANY WARRANTY OR REPRESENTATION AS TO THE VALIDITY, SCOPE, EFFECTIVENESS OR USEFULNESS OF ANY TECHNOLOGY OR ANY INVENTION.**
6. **THE REMEDY SET FORTH HEREIN SHALL BE THE SOLE AND EXCLUSIVE REMEDY OF THE PURCHASER FOR BREACH OF WARRANTY WITH RESPECT TO THE PRODUCT.**
7. **ADVANTEST WILL NOT HAVE ANY LIABILITY TO THE PURCHASER FOR ANY INDIRECT, INCIDENTAL, SPECIAL, CONSEQUENTIAL OR PUNITIVE DAMAGES, INCLUDING, WITHOUT LIMITATION, LOSS OF ANTICIPATED PROFITS OR REVENUES, IN ANY AND ALL CIRCUMSTANCES, EVEN IF ADVANTEST HAS BEEN ADVISED OF THE POSSIBILITY OF SUCH DAMAGES AND WHETHER ARISING OUT OF BREACH OF CONTRACT, WARRANTY, TORT (INCLUDING, WITHOUT LIMITATION, NEGLIGENCE), STRICT LIABILITY, INDEMNITY, CONTRIBUTION OR OTHERWISE. TORT (INCLUDING, WITHOUT LIMITATION, NEGLIGENCE), STRICT LIABILITY, INDEMNITY, CONTRIBUTION OR OTHERWISE.**
8. **OTHER THAN THE REMEDY FOR THE BREACH OF WARRANTY SET FORTH HEREIN, ADVANTEST SHALL NOT BE LIABLE FOR, AND HEREBY DISCLAIMS TO THE FULLEST EXTENT PERMITTED BY LAW ANY LIABILITY FOR, DAMAGES FOR PRODUCT FAILURE OR DEFECT, WHETHER ARISING OUT OF BREACH OF CONTRACT, TORT (INCLUDING, WITHOUT LIMITATION, NEGLIGENCE), STRICT LIABILITY, INDEMNITY, CONTRIBUTION OR OTHERWISE.**

CUSTOMER SERVICE DESCRIPTION

In order to maintain safe and trouble-free operation of the Product and to prevent the incurrence of unnecessary costs and expenses, Advantest recommends a regular preventive maintenance program under its maintenance agreement.

Advantest's maintenance agreement provides the Purchaser on-site and off-site maintenance, parts, maintenance machinery, regular inspections, and telephone support and will last a maximum of ten years from the date the delivery of the Product. For specific details of the services provided under the maintenance agreement, please contact the nearest Advantest office listed at the end of this Operation Manual or Advantest's sales representatives.

Some of the components and parts of this Product have a limited operating life (such as, electrical and mechanical parts, fan motors, unit power supply, etc.). Accordingly, these components and parts will have to be replaced on a periodic basis. If the operating life of a component or part has expired and such component or part has not been replaced, there is a possibility that the Product will not perform properly. Additionally, if the operating life of a component or part has expired and continued use of such component or part damages the Product, the Product may not be repairable. Please contact the nearest Advantest office listed at the end of this Operation Manual or Advantest's sales representatives to determine the operating life of a specific component or part, as the operating life may vary depending on various factors such as operating condition and usage environment.

SALES & SUPPORT OFFICES

Advantest Korea Co., Ltd.

22BF, Kyobo KangNam Tower,
1303-22, Seocho-Dong, Seocho-Ku, Seoul #137-070, Korea
Phone: +82-2-532-7071
Fax: +82-2-532-7132

Advantest (Suzhou) Co., Ltd.

Shanghai Branch Office:
Bldg. 6D, NO.1188 Gumei Road, Shanghai, China 201102 P.R.C.
Phone: +86-21-6485-2725
Fax: +86-21-6485-2726

Shanghai Branch Office:
406/F, Ying Building, Quantum Plaza, No. 23 Zhi Chun Road,
Hai Dian District, Beijing,
China 100083
Phone: +86-10-8235-3377
Fax: +86-10-8235-6717

Advantest (Singapore) Pte. Ltd.

438A Alexandra Road, #08-03/06
Alexandra Technopark Singapore 119967
Phone: +65-6274-3100
Fax: +65-6274-4055

Advantest America, Inc.

3201 Scott Boulevard, Suite, Santa Clara, CA 95054, U.S.A
Phone: +1-408-988-7700
Fax: +1-408-987-0691

ROHDE & SCHWARZ Europe GmbH

Mühldorfstraße 15 D-81671 München, Germany
(P.O.B. 80 14 60 D-81614 München, Germany)
Phone: +49-89-4129-13711
Fax: +49-89-4129-13723

ADVANTEST[®]

<http://www.advantest.co.jp>